



# EN- EBIKE

欧标产品目录册

## 2027

PRODUCT CATALOGUE



STAR UNION  
WUXING



# GLOBAL FOOTPRINT



MORE THAN SALES

## Global After-sales Sites 全球售后中心

### Jiande Wuxing Bicycle Co., Ltd. (Group) 建德市五星车业有限公司 (总公司)

地址: 浙江省建德市梅城镇城南工业功能区众悦路1号  
ADD: No.1, Zhongyue Road, Chengnan Industrial district, Meicheng town, Jiande City, Zhejiang Province, China  
TEL: 86(0)571-5831 9944 ZIP: 311604

### Zhejiang Office 浙江办事处

地址: 浙江省永康市黄城里15街37号  
ADD: No. 37, 15th Street, Huangchengli, Yongkang City, Zhejiang Province, China  
TEL: 86-13758973902 ZIP: 321300

### Jiangsu Office 江苏办事处

地址: 江苏省无锡市锡山区羊尖镇廊下锡苑路20号  
ADD: No. 20, Langxia Xiwan Road, Yangjian Town, Xishan District, Wuxi City, Jiangsu Province, China  
TEL: 86-13735443999 ZIP: 214100

### Tianjin Office 天津办事处

地址: 天津市北辰区津永公路津峰标准件厂(五星仓库)  
ADD: Jinfeng Standard Parts Factory, Jinyong Road, Tianjin Beichen District, Wuxing Warehouse, China  
TEL: 86-13612184216 ZIP: 300401

### Guangdong Office 广东办事处

地址: 广东省东莞市长安镇东门中路鑫伟润工业园A栋1楼  
ADD: 1st Floor, Building A, Xinweirun Industrial Park, Dongmen Middle Road, Chang'an Town, Dongguan City, Guangdong Province, China  
TEL: 86-15657901066 ZIP: 523000

### Taiwan Office 臺灣辦事處

地址: 407 臺中市西屯區惠來路三段198之1號7樓之2  
ADD: 7F.-2, No.198-1, Sec.3, Huilai Rd., Xitun Dist., Taichung City, 407368, Taiwan  
TEL: Carol (+886-952225167) / Sophia (+886-963806898) ZIP: 40749

### German Subsidiary: Starunion E-Bike Components GmbH

Am Sägewerk 1 | 55124 | Mainz | Germany  
TEL: + 49 (0) 6131 5866439  
Mobile: + 49(0)172 2329066  
ZIP: 55124

### USA Office

ADD: Irvine, CA  
TEL: Cash (+17865783570)  
ZIP: 92610

# COMPANY PROFILE

- Established in 1985, entered bicycle industry in 1992.
- Engaged in design, manufacturing and marketing of electric bicycle parts and components since 1997.
- "Star Union" established in 2010 as independent high-end business division with specialized teams for research, marketing and production.
- Two manufacturing bases, four brands, over 1200 employees.
- Products include electric bicycles, mini e-scooters, GB e-bikes, and electric motorcycles.
- Over 300 patented inventions.

- 成立于 1985 年，1992 年进军自行车领域。
- 1997 年专注于电动自行车零部件的设计研发、生产制造与营销。
- 2010 年成立高端事业部，完全独立的研产销团队、全新优化的配套体系，以欧美标准为定位服务于一线品牌。
- 两大制造基地，四大品牌，员工 1200 余人。
- 产品包括电动助力自行车、迷你电动滑板车、国标电动自行车、电动自行车、摩托车。
- 300 多项专利发明。

40+

公司成立至今 40 余年  
40 Years of History

300+

专利数量 300 余项  
More Than 300 Patents

1200

员工人数 1200 余人  
1,200 Employees

140000

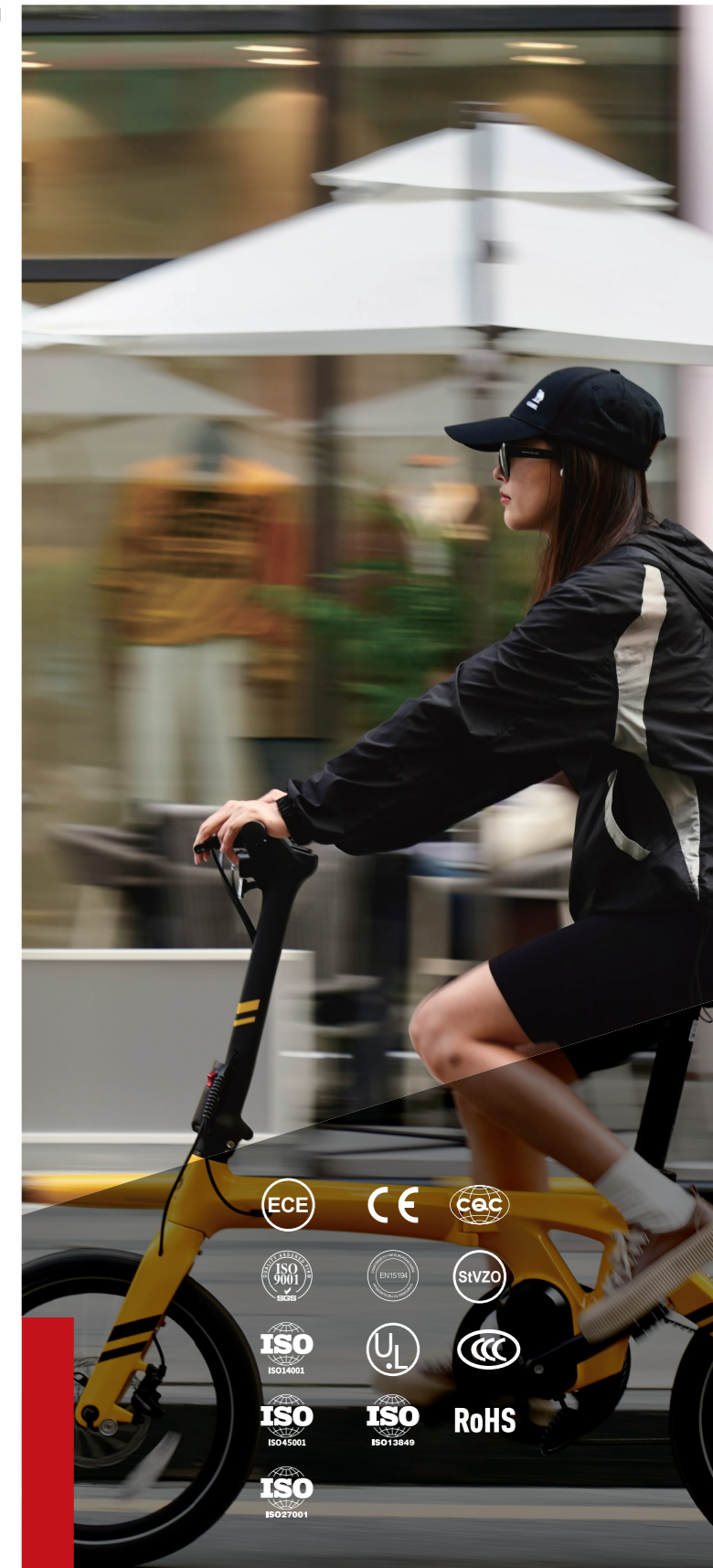
占地面积 140000 余平  
Floor Space



# DECLARATION OF CONFORMITY

- Complies with CQC, RoHS, CCC, CE, ECE R149/R148, German road traffic permit regulations.
- Ability to carry out testing services and independent products in accordance with accreditation criteria and capabilities.
- Products include Hall handles, grips, electric controllers, brake levers, meters, headlights, taillights, and motors.
- Some national standard headlights, taillights, and motors have obtained 3C certification.
- Mid-mounted motor, Topology display instruments, headlights, and taillights have obtained CE certification.

- 符合中国质量认证中心 CQC 认证；针对由欧盟实施的《电气电子设备中限制使用某些有害物质指令》RoHS 指令；符合 RoHS 标准的产品有霍尔转把、电控器、液压刹把、仪表、车灯。
- 符合国家强制性安全 CCC 认证；目前部分国标车灯、尾灯、已获得 3C 认证。
- 获得由欧盟指定机构的 CE 认证证书、目前中置电机、Topology 显示仪表、车前灯、尾灯已获得 CE 认证；车灯及反光片产品，符合欧盟指令 前灯 ECE R149、信号灯 R148 认证要求；前灯、尾灯或反光片符合德国道路交通许可规范。





# BRAND ADVANTAGES

## 品牌优势



### Outstanding Development Capabilities 出色的研发能力

40 years of profound technical expertise combined with a top-tier R&D team composed of numerous PhDs.

40 年深厚的技术积累，结合众多博士组成的顶级研发团队。



### Management System 管理体系

Passed CCC, E-Mark, CE, K-MarK, RoHs, EN15194 and other product certifications and ISO9001-2015 and other management system certifications.

通过 CCC、E-Mark、CE、K-MarK、RoHS、EN15194 等产品认证及 ISO9001-2015 等管理体系认证。



### Lean Digital Manufacturing 精益数智化制造

Implement digital upgrades, promote CNC automated precision manufacturing and intelligent testing equipment, and achieve comprehensive improvement of factory intelligence.

实施数字化升级，推进 CNC 自动化精密制造和智能检测设备，实现工厂智能化的全面提升。



### A Strong Engineering Team 强大的工程师团队

A strong team of approximately 140 engineers, covering mechanical engineering, electronic hardware, electronic software, optics, motor design, industrial design, and process engineering.

约 140 人的强大工程师团队，涵盖机械工程、电子硬件、电子软件、光学、电机设计、工业设计、工艺工程等领域。



### Manufacturing Capabilities and Scale 强大的自主生产能力与规模

Covering aluminum die-casting, plastic and rubber injection molding, automatic polishing, painting, powder coating, mold manufacturing, and automated assembly. Strong in-house manufacturing capabilities and scale. Covering aluminum die-casting, plastic and rubber injection molding, automatic polishing, painting, powder coating, mold manufacturing, and automated assembly.

涵盖：铝压铸、塑料及橡胶注塑、自动抛光、喷涂、喷塑、模具制造及自动化组装。



### Global Patents 全球专利

It has more than 300 patents for inventions, utility models, and appearance. Its product design and quality are far ahead of domestic competitors.

拥有发明、实用新型、外观等专利 300 余项。产品设计与品质遥遥领先于国内竞争厂商。



### Manufacturing and Quality 制造与品控

The core components of highly integrated automation equipment are all independently processed Full-level inspection and quality control/PLM system tracking

高集成度自动化设备核心部件均为自主加工  
全工序级别的全检品控 / PLM 系统追踪。

# E-Folding



## CONTENTS

产品目录

霍尔转把 HALL SENSOR THROTTLES	10-39
刹把 ELECTRIC BRAKE LEVERS	40-53
电控器 SWITCHES	54-65
把套 GRIPS	66-67
客户定制产品 ODM CASE INTRODUCTION	68-73

# HALL SENSOR THROTTLES

霍尔转把

HALL SENSOR THROTTLES



Reliable technology, stable performance; High strength plastic shell, light, durable; Aluminum handlebar Clamping loop with firm locking performance; Conforming to ergonomic operation, light and comfortable, strong holding power, Perspiration; Environmental material, RoHS certification.

工艺可靠、性能稳定；高强度塑胶外壳，轻巧、耐用；夹紧式铝合金锁紧环，锁紧更稳固；符合人体工程操作，手感轻盈、舒适、握着力强，排汗；材料环保，RoHS 认证。

## 400ZXS

开放式侧盖，便于维修；夹紧式铝合金锁紧环，锁紧更稳固；铁氟龙耐高温电线，适应各种恶劣环境；EMC 电磁兼容性设计，电磁环境可靠运行；达到 IPX5 级防水性能；材料环保，RoHS、REACH 认证。

Removable side cover, easy for maintenance; Aluminum handlebar clamping loop with firm locking performance; Teflon high temperature resistant wire, suitable for various environments; EMC electromagnetic compatibility design, reliable operation in electromagnetic environment; Reach IPX5 waterproof ability; Environmental, and RoHS, REACH certification.

标准 / Approvals	RoHS / REACH
尺寸 / Size	L52mm W44mm H79mm
重量 / Weight	95g
防水 / Waterproof	IPX5
材料 / Materials	PC/ABS
芯线 / Wiring	5 Pins
电压 / Voltage	Working voltage 5v Output voltage 0.8-4.3V
工作温度 / Operating Temperature	-25°C ~ 65°C
电线拉脱力 / Wire Tension	≥130N
旋转角度 / Rotation Angle	0° ~ 50°
扭转强度 / Spin Intensity	≥7N.m
耐久性 / Durability	100,000 mating cycle



NEW

HALL SENSOR THROTTLES

## 412ZXS

开放式侧盖，便于维修；夹紧式铝合金锁紧环，锁紧更稳固；铁氟龙耐高温电线，适应各种恶劣环境；EMC 电磁兼容性设计，电磁环境可靠运行；达到 IPX5 级防水性能；材料环保，RoHS、REACH 认证。

Removable side cover, easy for maintenance; Aluminum handlebar clamping loop with firm locking performance; Teflon high temperature resistant wire, suitable for various environments; EMC electromagnetic compatibility design, reliable operation in electromagnetic environment; Reach IPX5 waterproof ability; Environmental, and RoHS, REACH certification.

标准 / Approval	RoHS / REACH
尺寸 / Size	L73.5mm W37.8mm H86.6mm
重量 / Weight	105.6g
防水 / Waterproof	IPX5
材料 / Material	PC/ABS
芯线 / Wiring	7 Pins
电压 / Voltage	Working voltage 5v Output voltage 0.8-4.2V
工作温度 / Operating Temperature	-25°C ~ 65°C
电线拉脱力 / Wire Tension	≥130N
旋转角度 / Rotation Angle	0° ~ 42°
扭转强度 / Spin Intensity	≥7N.m
耐久性 / Durability	100,000 mating cycle



NEW

## FT378X

开放式侧盖，便于维修；尾部内胀式锁紧，美观稳固；铁氟龙耐高温电线，适应各种恶劣环境；EMC 电磁兼容性设计，电磁环境可靠运行；达到 IPX7 级防水性能；材料环保，RoHS、REACH 认证。

Removable side cover, easy for maintenance; Rear inner expansion locking, beautiful and stable; Teflon high temperature resistant wire, suitable for various environments; EMC electromagnetic compatibility design, reliable operation in electromagnetic environment; Reach IPX7 waterproof ability; Environmental, and RoHS、REACH certification.

标准 /Approval	RoHS / REACH
尺寸 /Size	L65mm W37.5mm H45.5mm
重量 /Weight	54g
防水 /Waterproof	IPX7
材料 /Material	ABS
芯线 /Wiring	3 Pins
电压 /Voltage	Working voltage 5v Output voltage 0.8-4.2V
工作温度 /Operating Temperature	-25°C ~ 65°C
电线拉脱力 /Wire Tension	≥60N
旋转角度 /Rotation Angle	0° ~ 70°
扭转强度 /Spin Intensity	≥9N.m
耐久性 /Durability	100,000 mating cycle



## 376ZX

采用外走线方式，操作更方便快捷；开放式侧盖，便于维修；铁氟龙耐高温电线，适应各种恶劣环境；达到 IPX7 级防水性能；材料环保，RoHS、REACH 认证。

External wiring is adopted, free matching and non-interference; Removable side cover, easy for maintenance; Teflon high temperature resistant wire, suitable for various environments; Reach IPX7 waterproof ability; Environmental, and RoHS、REACH certification.

标准 /Approval	RoHS / REACH
尺寸 /Size	L65mm W52mm H17mm
重量 /Weight	28g
防水 /Waterproof	IPX7
材料 /Material	PA+GF
芯线 /Wiring	3 Pins
电压 /Voltage	Working voltage 5v Output voltage 0.8-4.2V
工作温度 /Operating Temperature	-25°C ~ 65°C
电线拉脱力 /Wire Tension	≥100N
旋转角度 /Rotation Angle	0° ~ 35°
扭转强度 /Spin Intensity	≥5N.m
耐久性 /Durability	100,000 mating cycle



## IPX7

Excellent waterproof performance  
For riding in various scenes

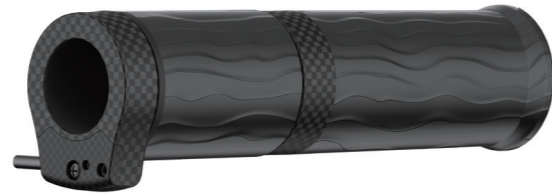
## FT410X-T/HT566-HT568

NEW

开放式侧盖,便于维修;尾部内胀式锁紧,美观稳固;铁氟龙耐高温电线,适应各种恶劣环境;EMC电磁兼容性设计,电磁环境可靠运行;达到IPX7级防水性能;材料环保,RoHS、REACH认证。

Removable side cover, easy for maintenance; Rear inner expansion locking, beautiful and stable; Teflon high temperature resistant wire, suitable for various environments; EMC electromagnetic compatibility design, reliable operation in electromagnetic environment; Reach IPX7 waterproof ability; Enviromental, and RoHS、REACH certification.

标准 /Approval	RoHS / REACH
尺寸 /Size	L140.5mm W43mm H34.5mm
重量 /Weight	111g
防水 /Waterproof	IPX7
材料 /Material	PC/ABS、PVC
芯线 /Wiring	3 Pins
电压 /Voltage	Working voltage 5v Output voltage 0.8-4.2V
工作温度 /Operating Temperature	-25°C~ 65°C
电线拉脱力 /Wire Tension	≥60N
旋转角度 /Rotation Angle	0° ~ 70°
扭转强度 /Spin Intensity	≥9N.m
耐久性 /Durability	100,000 mating cycle



## FT416X-T /HT578.L/R

NEW

铁氟龙耐高温电线,适应各种恶劣环境;两用转把,既可以用拇指按压操控,也可用手掌拧转操控;匹配把套尾部有通孔和不通孔的两种,尾部通孔的把套可以匹配端盖和转向灯;达到IPX7级防水性能;材料环保,RoHS、REACH认证。Teflon high temperature resistant wire, suitable for various environments; Two kinds of grips selectable, Unfair hole version, Through hole version matching with end caps, Through hole version matching with turning indicator; Dual using operation, Palm twisting, Thumb pressing; Reach IPX7 waterproof ability.

标准 /Approval	RoHS / REACH
尺寸 /Size	L144mm W46mm H65mm
重量 /Weight	110g
防水 /Waterproof	IPX7
材料 /Material	PC/ABS、PVC
芯线 /Wiring	3 Pins
电压 /Voltage	Working voltage 5v Output voltage 0.8-4.2V
工作温度 /Operating Temperature	-25°C~ 65°C
电线拉脱力 /Wire Tension	≥60N
旋转角度 /Rotation Angle	0° ~ 50°
扭转强度 /Spin Intensity	≥12N.m
耐久性 /Durability	100,000 mating cycle



## 360DX+HT550

儿童款

工艺可靠、性能稳定;高强度塑胶外壳轻巧、耐用;夹紧式铝合金锁紧环,锁紧更稳固;3档电量显示,电量一目了然,欠压提醒;达到IPX5级防水性能;材料环保,RoHS、REACH认证。适用儿童车,把横管φ19。

Reliable technology, stable performance; High strength plastic shell, light, durable; Aluminum handlebar clamping loop with firm locking performance; 3 Speed levels, low voltage alarm; IPX5 waterproof ability; Enviromental, and RoHS、REACH certification; Apply on children bike with φ19 handlebar size.

标准 /Approval	RoHS / REACH
尺寸 /Size	L135mm W67mm H68mm
重量 /Weight	112g
防水 /Waterproof	IPX5
材料 /Material	ABS、PVC
芯线 /Wiring	6 Pins
电压 /Voltage	Working voltage 5v Output voltage 0.8-4.2V
工作温度 /Operating Temperature	-25°C~ 65°C
电线拉脱力 /Wire Tension	≥120N
旋转角度 /Rotation Angle	0° ~ 70°
扭转强度 /Spin Intensity	≥12N.m
耐久性 /Durability	100,000 mating cycle



## 390X

开放式侧盖, 便于维修; 夹紧式铝合金锁紧环, 锁紧更稳固; 铁氟龙耐高温电线, 适应各种恶劣环境; EMC 电磁兼容性设计, 电磁环境可靠运行; 达到 IPX7 级防水性能; 材料环保, RoHS、REACH 认证。

Removable side cover, easy for maintenance; Aluminum handlebar clamping loop with firm locking performance; Teflon high temperature resistant wire, suitable for various environments; EMC electromagnetic compatibility design, reliable operation in electromagnetic environment; Reach IPX7 waterproof ability; Enviromental, and RoHS、REACH certification.

标准 /Approval	RoHS / REACH
尺寸 /Size	L65mm W47mm H65mm
重量 /Weight	65g
防水 /Waterproof	IPX7
材料 /Material	ABS、PVC
芯线 /Wiring	3 Pins
电压 /Voltage	Working voltage 5v Output voltage 0.8-4.2V
工作温度 /Operating Temperature	-25°C~ 65°C
电线拉脱力 /Wire Tension	≥130N
旋转角度 /Rotation Angle	0° ~ 70°
扭转强度 /Spin Intensity	≥9N.m
耐久性 /Durability	100,000 mating cycle



## 282DX

高强度塑胶外壳, 轻巧、耐用; 夹紧式铝合金锁紧环, 锁紧更稳固; 4 档电量显示, 电量一目了然, 欠压提醒; 采用电镀工艺区域装饰, 显高档、更美观; 达到 IPX5 级防水性能; 材料环保, RoHS、REACH 认证。

High strenth plastic shell, light, durable; Aluminum handlebar clamping loop with firm locking performance; 4 Voltage levels, low voltage alarm; Using electroplating technology for decorating, more upscale and beautiful; IPX5 waterproof ability; Enviromental, and RoHS、REACH certification.

标准 /Approval	RoHS / REACH
尺寸 /Size	L97.5mm W68mm H75mm
重量 /Weight	100g
防水 /Waterproof	IPX5
材料 /Material	PC/ABS、PVC
芯线 /Wiring	5 Pins
电压 /Voltage	Working voltage 5v Output voltage 0.8-4.2V
工作温度 /Operating Temperature	-25°C~ 65°C
电线拉脱力 /Wire Tension	≥130N
旋转角度 /Rotation Angle	0° ~ 70°
扭转强度 /Spin Intensity	≥9N.m
耐久性 /Durability	100,000 mating cycle



## 336X+HT375

开放式侧盖, 便于维修; 铁氟龙耐高温电线, 适应各种恶劣环境; EMC 电磁兼容性设计, 电磁环境可靠运行; 采用外走线, 随意配套, 不干涉; 采用两档开关, 随意控制电源等功能; 达到 IPX5 级防水性能。

Removable side cover, easy for maintenance; Teflon high temperature resistant wire, suitable for various environments; EMC electromagnetic compatibility design, reliable operation in electromagnetic environment; External wiring is adopted, free matching and non-interference; Two level switch is used to control power supply and other functions; Reach IPX5 waterproof ability.

标准 /Approval	RoHS / REACH
尺寸 /Size	L66mm W63mm H49mm
重量 /Weight	94g
防水 /Waterproof	IPX5
材料 /Material	PC/ABS、PVC
芯线 /Wiring	3 Pins
电压 /Voltage	Working voltage 5v Output voltage 0.8-4.2V
工作温度 /Operating Temperature	-25°C~ 65°C
电线拉脱力 /Wire Tension	≥130N
旋转角度 /Rotation Angle	0° ~ 70°
扭转强度 /Spin Intensity	≥9N.m
耐久性 /Durability	100,000 mating cycle



## 336X/2+HT375

开放式侧盖, 便于维修; 铁氟龙耐高温电线, 适应各种恶劣环境; EMC 电磁兼容性设计, 电磁环境可靠运行; 采用外走线, 随意配套, 不干涉; 采用三档开关, 随意控制电源等功能; 达到 IPX5 级防水性能。

Removable side cover, easy for maintenance; Teflon high temperature resistant wire, suitable for various environments; EMC electromagnetic compatibility design, reliable operation in electromagnetic environment; External wiring is adopted, free matching and non-interference; Three level switch is used to control power supply and other functions; Reach IPX5 waterproof ability.

标准 /Approval	RoHS / REACH
尺寸 /Size	L66mm W63mm H49mm
重量 /Weight	95g
防水 /Waterproof	IPX5
材料 /Material	PC/ABS、PVC
芯线 /Wiring	5 Pins
电压 /Voltage	Working voltage 5v Output voltage 0.8-4.2V
工作温度 /Operating Temperature	-25°C~ 65°C
电线拉脱力 /Wire Tension	≥130N
旋转角度 /Rotation Angle	0° ~ 70°
扭转强度 /Spin Intensity	≥9N.m
耐久性 /Durability	100,000 mating cycle



## 298X+HT246+T246

高强度塑胶外壳，轻巧、耐用；夹紧式铝合金锁紧环，锁紧更稳固；铁氟龙耐高温电线，适应各种恶劣环境；采用双磁钢双霍尔设计，使用寿命更长；达到IPX7 防尘防水性能；材料环保，RoHS、REACH 认证。

High strength plastic shell, light, durable; Aluminum handlebar clamping loop with firm locking performance; Teflon high temperature resistant wire, suitable for various environments; Elt uses dual magnet design with long service life; IPX7 water / dust proof ability; Environmental, and RoHS、REACH certification.

标准 /Approval	RoHS / REACH
尺寸 /Size	L140mm W58mm H50mm
重量 /Weight	125g
防水 /Waterproof	IPX7
材料 /Material	PC/ABS、PVC
芯线 /Wiring	6 Pins
电压 /Voltage	Working voltage 5v Output voltage 0.8-4.2V
工作温度 /Operating Temperature	-25°C~ 65°C
电线拉脱力 /Wire Tension	≥130N
旋转角度 /Rotation Angle	0° ~ 70°
扭转强度 /Spin Intensity	≥12N.m
耐久性 /Durability	100,000 mating cycle



## 298X/2+HT246+T246

高强度塑胶外壳，轻巧、耐用；夹紧式铝合金锁紧环，锁紧更稳固；铁氟龙耐高温电线，适应各种恶劣环境；采用双磁钢双霍尔设计，使用寿命更长；达到IPX7 防尘防水性能；材料环保，RoHS、REACH 认证。

High strength plastic shell, light, durable; Aluminum handlebar clamping loop with firm locking performance; Teflon high temperature resistant wire, suitable for various environments; Elt uses dual magnet design with long service life; IPX7 water / dust proof ability; Environmental, and RoHS、REACH certification.

标准 /Approval	RoHS / REACH
尺寸 /Size	L140mm W58mm H50mm
重量 /Weight	125g
防水 /Waterproof	IPX7
材料 /Material	PC/ABS、PVC
芯线 /Wiring	6 Pins
电压 /Voltage	Working voltage 5v Output voltage 0.8-4.2V
工作温度 /Operating Temperature	-25°C~ 65°C
电线拉脱力 /Wire Tension	≥130N
旋转角度 /Rotation Angle	0° ~ 70°
扭转强度 /Spin Intensity	≥12N.m
耐久性 /Durability	100,000 mating cycle



## 260X+HT375+T375

高强度塑胶外壳，轻巧、耐用；开放式侧盖，便于维修；采用内走线，需把横管打孔处理；铁氟龙耐高温电线，适应各种恶劣环境；EMC 电磁兼容性设计，电磁环境可靠运行；达到IPX7 级防水性能。

High strength plastic shell, light, durable; Removable side cover, easy for maintenance; Internal wiring is adopted, the handlebar needs to be punched; Rear inner expansion locking, beautiful and stable; Teflon high temperature resistant wire, suitable for various environments; EMC electromagnetic compatibility design, reliable operation in electromagnetic environment; Reach IPX7 waterproof ability.

标准 /Approval	RoHS / REACH
尺寸 /Size	L153mm W50mm H62mm
重量 /Weight	85g
防水 /Waterproof	IPX7
材料 /Material	PC/ABS、PVC
芯线 /Wiring	5 Pins
电压 /Voltage	Working voltage 5v Output voltage 0.8-4.2V
工作温度 /Operating Temperature	-25°C~ 65°C
电线拉脱力 /Wire Tension	≥130N
旋转角度 /Rotation Angle	0° ~ 70°
扭转强度 /Spin Intensity	≥9N.m
耐久性 /Durability	100,000 mating cycle



## 112DXS+HT375

电锁开关、安全操控；高强度塑胶外壳，轻巧、耐用；夹紧式铝合金锁紧环，锁紧更稳；采用电镀工艺区域装饰，显高档、更美观；达到IPX4 级防水性能；材料环保，RoHS、REACH 认证。

Electric lock switch, safety control; High strength plastic shell, light, durable; Aluminum handlebar clamping loop with firm locking performance; Using electroplating technology for decorating, more upscale and beautiful; IPX4 waterproof ability; Environmental material, RoHS、REACH certification.

标准 /Approval	RoHS / REACH
尺寸 /Size	L141mm W84mm H62mm
重量 /Weight	220g
防水 /Waterproof	IPX4
材料 /Material	PC/ABS、PVC
芯线 /Wiring	5 Pins
电压 /Voltage	Working voltage 5v Output voltage 0.8-4.2V
工作温度 /Operating Temperature	-25°C~ 65°C
电线拉脱力 /Wire Tension	≥60N
旋转角度 /Rotation Angle	0° ~ 70°
扭转强度 /Spin Intensity	≥9N.m
耐久性 /Durability	100,000 mating cycle



## 366ZX

指拨操控, 外形时尚、精致; PC/ABS 高强度塑胶外壳, 轻巧、耐用; 采用外走线, 随意配套; 铁氟龙耐高温电线, 适应各种恶劣环境; 达到 IPX7 级防水性能; 指拨整体抗扭强度加强后可达 12N.m.

Thumb control with fashion design, exquisite; PC/High strength ABS shell, light, durable; External wiring is adopted, free matching and non-interference; Teflon high temperature resistant wire, suitable for various environments; Reach IPX7 waterproof ability; The overall torsional strength of fingertip can reach 12N. m after strengthening.

标准 /Approval	RoHS / REACH
尺寸 /Size	L66.5mm W31.5mm H46mm
重量 /Weight	50g
防水 /Waterproof	IPX7
材料 /Material	PC/ABS、TPR
芯线 /Wiring	5 Pins
电压 /Voltage	Working voltage 5v Output voltage 0.8-4.2V
工作温度 /Operating Temperature	-25°C ~ 65°C
电线拉脱力 /Wire Tension	≥60N
旋转角度 /Rotation Angle	0° ~ 50°
扭转强度 /Spin Intensity	≥12N.m
耐久性 /Durability	100,000 mating cycle



## 270X.L/R

指拨操控, 外形时尚、精致; PC/ABS 高强度塑胶外壳, 轻巧、耐用; 采用外走线, 随意配套; 铁氟龙耐高温电线, 适应各种恶劣环境; 达到 IPX7 级防水性能; 材料环保, RoHS、REACH 认证.

Thumb control with fashion design, exquisite; PC/High strength ABS shell, light, durable; External wiring is adopted, free matching and non-interference; Teflon high temperature resistant wire, suitable for various environments; Reach IPX7 waterproof ability; Enviromental, and RoHS、REACH certification.

标准 /Approval	RoHS / REACH
尺寸 /Size	L64mm W24mm H27mm
重量 /Weight	38g
防水 /Waterproof	IPX7
材料 /Material	PC/ABS、TPR
芯线 /Wiring	3 Pins
电压 /Voltage	Working voltage 5v Output voltage 0.8-4.2V
工作温度 /Operating Temperature	-25°C ~ 65°C
电线拉脱力 /Wire Tension	≥60N
旋转角度 /Rotation Angle	0° ~ 50°
扭转强度 /Spin Intensity	≥7N.m
耐久性 /Durability	100,000 mating cycle



带开关调速指拨转把  
Thumb throttle with buttons

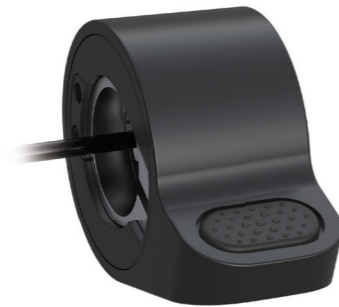


## 350ZX

适配 U 型管安装；采用内侧走线方式，可顺从把横管排线，更美观；铁氟龙耐高温电线，适应各种恶劣环境；达到 IPX7 级防水性能；指拨整体抗扭强度加强后可达 12N.m。

Suitable for U handlebar; The inner wiring mode is adopted, and the horizontal pipe can be arranged in compliance, which is more beautiful; Teflon high temperature resistant wire, suitable for various environments; Reach IPX7 waterproof ability; The overall torsional strength of fingertip can reach 12N. m after strengthening.

标准 /Approval	RoHS / REACH
尺寸 /Size	L65mm W28.5mm H46mm
重量 /Weight	40g
防水 /Waterproof	IPX7
材料 /Material	PC/ABS、TPR
芯线 /Wiring	3 Pins
电压 /Voltage	Working voltage 5v Output voltage 0.8-4.2V
工作温度 /Operating Temperature	-25°C~ 65°C
电线拉脱力 /Wire Tension	≥60N
旋转角度 /Rotation Angle	0° ~ 50°
扭转强度 /Spin Intensity	≥12N.m
耐久性 /Durability	100,000 mating cycle

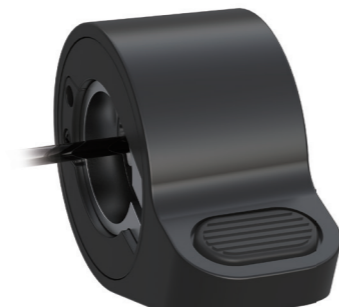


## 350ZX/3

适配 U 型管安装；采用内侧走线方式，可顺从把横管排线，更美观；铁氟龙耐高温电线，适应各种恶劣环境；达到 IPX7 级防水性能；指拨整体抗扭强度加强后可达 12N.m。

Suitable for U handlebar; The inner wiring mode is adopted, and the horizontal pipe can be arranged in compliance, which is more beautiful; Teflon high temperature resistant wire, suitable for various environments; Reach IPX7 waterproof ability; The overall torsional strength of fingertip can reach 12N. m after strengthening.

标准 /Approval	RoHS / REACH
尺寸 /Size	L65mm W28.5mm H46mm
重量 /Weight	40g
防水 /Waterproof	IPX7
材料 /Material	PC/ABS、TPR
芯线 /Wiring	3 Pins
电压 /Voltage	Working voltage 5v Output voltage 0.8-4.2V
工作温度 /Operating Temperature	-25°C~ 65°C
电线拉脱力 /Wire Tension	≥60N
旋转角度 /Rotation Angle	0° ~ 50°
扭转强度 /Spin Intensity	≥12N.m
耐久性 /Durability	100,000 mating cycle



## 350ZX/4

适配 U 型管安装；采用内侧走线方式，可顺从把横管排线，更美观；铁氟龙耐高温电线，适应各种恶劣环境；达到 IPX7 级防水性能；指拨整体抗扭强度加强后可达 12N.m。

Suitable for U handlebar; The inner wiring mode is adopted, and the horizontal pipe can be arranged in compliance, which is more beautiful; Teflon high temperature resistant wire, suitable for various environments; Reach IPX7 waterproof ability; The overall torsional strength of fingertip can reach 12N. m after strengthening.

标准 /Approval	RoHS / REACH
尺寸 /Size	L65mm W28.5mm H46mm
重量 /Weight	40g
防水 /Waterproof	IPX7
材料 /Material	PC/ABS、TPR
芯线 /Wiring	3 Pins
电压 /Voltage	Working voltage 5v Output voltage 0.8-4.2V
工作温度 /Operating Temperature	-25°C~ 65°C
电线拉脱力 /Wire Tension	≥60N
旋转角度 /Rotation Angle	0° ~ 50°
扭转强度 /Spin Intensity	≥12N.m
耐久性 /Durability	100,000 mating cycle



## 230X/3

指拨操控，外形时尚、精致；适配U型管安装；高强度塑胶外壳，轻巧、耐用；采用内侧走线方式，可顺从把横管排线，更美观；铁氟龙耐高温电线，适应各种恶劣环境；达到IPX7级防水性能；材料环保，RoHS、REACH认证。

Thumb control with fashion design, exquisite; Suitable for U handlebar; High strength plastic shell, light, durable; The inner wiring mode is adopted, and the horizontal pipe can be arranged in compliance, which is more beautiful; Teflon high temperature resistant wire, suitable for various environments; Reach IPX7 waterproof ability; Environmental, and RoHS、REACH certification.

标准 /Approval	RoHS / REACH
尺寸 /Size	L65mm W28.5mm H46mm
重量 /Weight	40g
防水 /Waterproof	IPX7
材料 /Material	PC/ABS、TPR
芯线 /Wiring	3 Pins
电压 /Voltage	Working voltage 5v Output voltage 0.8-4.2V
工作温度 /Operating Temperature	-25°C ~ 65°C
电线拉脱力 /Wire Tension	≥60N
旋转角度 /Rotation Angle	0° ~ 50°
扭转强度 /Spin Intensity	≥9N.m
耐久性 /Durability	100,000 mating cycle



## 230X/4

指拨操控，外形时尚、精致；适配U型管安装；高强度塑胶外壳，轻巧、耐用；采用内侧走线方式，可顺从把横管排线，更美观；铁氟龙耐高温电线，适应各种恶劣环境；达到IPX7级防水性能；材料环保，RoHS、REACH认证。

Thumb control with fashion design, exquisite; Suitable for U handlebar; High strength plastic shell, light, durable; The inner wiring mode is adopted, and the horizontal pipe can be arranged in compliance, which is more beautiful; Teflon high temperature resistant wire, suitable for various environments; Reach IPX7 waterproof ability; Environmental, and RoHS、REACH certification.

标准 /Approval	RoHS / REACH
尺寸 /Size	L65mm W28.5mm H46mm
重量 /Weight	40g
防水 /Waterproof	IPX7
材料 /Material	PC/ABS、TPR
芯线 /Wiring	3 Pins
电压 /Voltage	Working voltage 5v Output voltage 0.8-4.2V
工作温度 /Operating Temperature	-25°C ~ 65°C
电线拉脱力 /Wire Tension	≥60N
旋转角度 /Rotation Angle	0° ~ 50°
扭转强度 /Spin Intensity	≥9N.m
耐久性 /Durability	100,000 mating cycle



## 216X.L/R

指拨操控，外形时尚、精致；适配U型管安装；高强度塑胶外壳，轻巧、耐用；采用内侧走线方式，可顺从把横管排线，更美观；铁氟龙耐高温电线，适应各种恶劣环境；材料环保，RoHS、REACH认证。

Thumb control with fashion design, exquisite; Suitable for U handlebar; High strength plastic shell, light, durable; The inner wiring mode is adopted, and the horizontal pipe can be arranged in compliance, which is more beautiful; Teflon high temperature resistant wire, suitable for various environments; Environmental, and RoHS、REACH certification.

标准 /Approval	RoHS / REACH
尺寸 /Size	L64mm W24mm H43.5mm
重量 /Weight	32g
防水 /Waterproof	IPX4
材料 /Material	PC/ABS、TPR
芯线 /Wiring	3 Pins
电压 /Voltage	Working voltage 5v Output voltage 0.8-4.2V
工作温度 /Operating Temperature	-25°C ~ 65°C
电线拉脱力 /Wire Tension	≥60N
旋转角度 /Rotation Angle	0° ~ 50°
扭转强度 /Spin Intensity	≥10N.m
耐久性 /Durability	100,000 mating cycle



## 216X/2.L/R

指拨操控，外形时尚、精致；适配U型管安装；高强度塑胶外壳，轻巧、耐用；采用内侧走线方式，可顺从把横管排线，更美观；铁氟龙耐高温电线，适应各种恶劣环境；材料环保，RoHS、REACH认证。

Thumb control with fashion design, exquisite; Suitable for U handlebar; High strength plastic shell, light, durable; The inner wiring mode is adopted, and the horizontal pipe can be arranged in compliance, which is more beautiful; Teflon high temperature resistant wire, suitable for various environments; Environmental, and RoHS、REACH certification.

标准 /Approval	RoHS / REACH
尺寸 /Size	L64mm W24mm H43.5mm
重量 /Weight	32g
防水 /Waterproof	IPX4
材料 /Material	PC/ABS、TPR
芯线 /Wiring	3 Pins
电压 /Voltage	Working voltage 5v Output voltage 0.8-4.2V
工作温度 /Operating Temperature	-25°C ~ 65°C
电线拉脱力 /Wire Tension	≥60N
旋转角度 /Rotation Angle	0° ~ 50°
扭转强度 /Spin Intensity	≥10N.m
耐久性 /Durability	100,000 mating cycle



## 288X

指拨操控，外形时尚、精致；适配U型管安装；高强度塑胶外壳，轻巧、耐用；铁氟龙耐高温电线，适应各种恶劣环境；采用双磁钢双霍尔设计，使用寿命更长；达到IPX7级防水能力；材料环保，RoHS、REAC认证。

Thumb control with fashion design, exquisite; Suitable for U handlebar; High strength plastic shell, light, durable; Teflon high temperature resistant wire, suitable for various environments; It uses dual magnet design with long service life; Reach IPX7 waterproof ability; Environmental, and RoHS, REACH certification.

标准 /Approval	RoHS / REACH
尺寸 /Size	L39mm W71mm H50mm
重量 /Weight	45g
防水 /Waterproof	IPX7
材料 /Material	PC/ABS
芯线 /Wiring	6 Pins
电压 /Voltage	Working voltage 5v Output voltage 0.8-4.2V
工作温度 /Operating Temperature	-25°C~ 65°C
电线拉脱力 /Wire Tension	≥130N
旋转角度 /Rotation Angle	0° ~ 50°
扭转强度 /Spin Intensity	≥9N.m
耐久性 /Durability	100,000 mating cycle



## 130X/3

经典款式，百搭，符合人体工程操作，手感轻盈，舒适；选择PC+ABS合金材料，综合性能好，抗冲击强度高；选用铝合金固定环，固定强度有保证；霍尔全封闭灌胶，达到IPX5级防水性能；材料环保，RoHS、REACH认证。

Classic style, versatile, ergonomic, lightweight and comfortable; Select PC+ABS alloy material with good comprehensive performance and high impact strength; The aluminum alloy fixing ring is selected, and the fixing strength is guaranteed; Hall is fully sealed with glue, achieving IPX5 waterproof performance; Environmental, and RoHS, REACH certification.

标准 /Approval	RoHS / REACH
尺寸 /Size	L60mm W30mm H47.6mm
重量 /Weight	45g
防水 /Waterproof	IPX5
材料 /Material	PC/ABS
芯线 /Wiring	3 Pins
电压 /Voltage	Working voltage 5v Output voltage 0.8-4.2V
工作温度 /Operating Temperature	-25°C~ 65°C
电线拉脱力 /Wire Tension	≥130N
旋转角度 /Rotation Angle	0° ~ 50°
扭转强度 /Spin Intensity	≥9N.m
耐久性 /Durability	100,000 mating cycle



## 272X+T478

指拨操控，外形时尚、精致；适配U型管安装；内部采用轴承组装，操作手感轻盈、舒适；两侧装有密封圈，防尘防水等级可达IP65。

Thumb control with fashion design, exquisite; Suitable for U handlebar; Assembled with internal bearings, which makes it feel light and comfortable; Both sides are equipped with sealing rings, and the dustproof and waterproof grade can reach IP65.

标准 /Approval	RoHS / REACH
尺寸 /Size	L165mm W46mm H67mm
重量 /Weight	200g
防水 /Waterproof	IP65
材料 /Material	PC/ABS、PVC
芯线 /Wiring	3 Pins
电压 /Voltage	Working voltage 5v Output voltage 0.8-4.2V
工作温度 /Operating Temperature	-25°C~ 65°C
电线拉脱力 /Wire Tension	≥130N
旋转角度 /Rotation Angle	0° ~ 70°
扭转强度 /Spin Intensity	≥9N.m
耐久性 /Durability	100,000 mating cycle



## 262X+HT375+T375

高强度塑胶外壳，轻巧、耐用；开放式侧盖，便于维修；采用内走线，需把横管打孔处理；铁氟龙耐高温电线，适应各种恶劣环境；EMC电磁兼容性设计，电磁环境可靠运行；达到IPX7级防水性能。

High strength plastic shell, light, durable; Removable side cover, easy for maintenance; Internal wiring is adopted, the handlebar needs to be punched; Rear inner expansion locking, beautiful and stable; Teflon high temperature resistant wire, suitable for various environments; EMC electromagnetic compatibility design, reliable operation in electromagnetic environment; Reach IPX7 waterproof ability.

标准 /Approval	RoHS / REACH
尺寸 /Size	L153mm W53mm H56mm
重量 /Weight	80g
防水 /Waterproof	IPX7
材料 /Material	PC/ABS、PVC
芯线 /Wiring	3 Pins
电压 /Voltage	Working voltage 5v Output voltage 0.8-4.2V
工作温度 /Operating Temperature	-25°C~ 65°C
电线拉脱力 /Wire Tension	≥130N
旋转角度 /Rotation Angle	0° ~ 70°
扭转强度 /Spin Intensity	≥9N.m
耐久性 /Durability	100,000 mating cycle



## 162DX+HT406

开放式侧盖，便于维修；尾部内胀式锁紧，美观稳固；适配把横管内径Φ17-Φ19；铁氟龙耐高温电线，适应各种恶劣环境；EMC电磁兼容性设计，电磁环境可靠运行；3档电量显示，电量一目了然，欠压提醒。

Removable side cover, easy for maintenance; Rear inner expansion locking, beautiful and stable; Suitable for Φ17-Φ19 handlebar; Teflon high temperature resistant wire, suitable for various environments; EMC electromagnetic compatibility design, reliable operation in electromagnetic environment; 3 Voltage levels, low voltage alarm.

标准 /Approval	RoHS / REACH
尺寸 /Size	L139mm W47mm H56mm
重量 /Weight	110g
防水 /Waterproof	IPX4
材料 /Material	PC/ABS、TPR
芯线 /Wiring	7 Pins
电压 /Voltage	24V/36V/48V/60V
工作温度 /Operating Temperature	-25°C~ 65°C
电线拉脱力 /Wire Tension	≥130N
旋转角度 /Rotation Angle	0° ~ 70°
扭转强度 /Spin Intensity	≥9N.m
耐久性 /Durability	100,000 mating cycle



## FT162DX+HT420

开放式侧盖，便于维修；尾部内胀式锁紧，美观稳固；适配把横管内径Φ17-Φ19；铁氟龙耐高温电线，适应各种恶劣环境；EMC电磁兼容性设计，电磁环境可靠运行；3档电量显示，电量一目了然，欠压提醒。

Removable side cover, easy for maintenance; Rear inner expansion locking, beautiful and stable; Suitable for Φ17-Φ19 handlebar; Teflon high temperature resistant wire, suitable for various environments; EMC electromagnetic compatibility design, reliable operation in electromagnetic environment; 3 Voltage levels, low voltage alarm.

标准 /Approval	RoHS / REACH
尺寸 /Size	L139mm W47mm H56mm
重量 /Weight	110g
防水 /Waterproof	IPX4
材料 /Material	PC/ABS、TPR
芯线 /Wiring	7 Pins
电压 /Voltage	24V/36V/48V/60V
工作温度 /Operating Temperature	-25°C~ 65°C
电线拉脱力 /Wire Tension	≥130N
旋转角度 /Rotation Angle	0° ~ 70°
扭转强度 /Spin Intensity	≥9N.m
耐久性 /Durability	100,000 mating cycle



## 160X/2+HT428

高强度塑胶外壳，轻巧、耐用；开放式侧盖，便于维修；尾部内胀式锁紧，美观稳固；适配把横管内径Φ17-Φ19；铁氟龙耐高温电线，适应各种恶劣环境；EMC电磁兼容性设计，电磁环境可靠运行。

High strength plastic shell, light, durable; Removable side cover, easy for maintenance; Rear inner expansion locking, beautiful and stable; Suitable for Φ17-Φ19 handlebar; Teflon high temperature resistant wire, suitable for various environments; EMC electromagnetic compatibility design, reliable operation in electromagnetic environment.

标准 /Approval	RoHS / REACH
尺寸 /Size	L137.5mm W62mm H50mm
重量 /Weight	110g
防水 /Waterproof	IPX4
材料 /Material	PC/ABS、TPR
芯线 /Wiring	5 Pins
电压 /Voltage	Working voltage 5v Output voltage 0.8-4.2V
工作温度 /Operating Temperature	-25°C~ 65°C
电线拉脱力 /Wire Tension	≥130N
旋转角度 /Rotation Angle	0° ~ 70°
扭转强度 /Spin Intensity	≥9N.m
耐久性 /Durability	100,000 mating cycle



## FT160X+HT420

高强度塑胶外壳，轻巧、耐用；开放式侧盖，便于维修；尾部内胀式锁紧，美观稳固；适配把横管内径Φ17-Φ19；铁氟龙耐高温电线，适应各种恶劣环境；EMC电磁兼容性设计，电磁环境可靠运行。

High strength plastic shell, light, durable; Removable side cover, easy for maintenance; Rear inner expansion locking, beautiful and stable; Suitable for Φ17-Φ19 handlebar; Teflon high temperature resistant wire, suitable for various environments; EMC electromagnetic compatibility design, reliable operation in electromagnetic environment.

标准 /Approval	RoHS / REACH
尺寸 /Size	L139mm W41.5mm H55mm
重量 /Weight	105g
防水 /Waterproof	IPX4
材料 /Material	PC/ABS、TPR
芯线 /Wiring	5 Pins
电压 /Voltage	Working voltage 5v Output voltage 0.8-4.2V
工作温度 /Operating Temperature	-25°C~ 65°C
电线拉脱力 /Wire Tension	≥130N
旋转角度 /Rotation Angle	0° ~ 70°
扭转强度 /Spin Intensity	≥9N.m
耐久性 /Durability	100,000 mating cycle



## 160X+HT406

高强度塑胶外壳，轻巧、耐用；开放式侧盖，便于维修；尾部内胀式锁紧，美观稳固；适配把横管内径  $\Phi 17-\Phi 19$ ；铁氟龙耐高温电线，适应各种恶劣环境；EMC 电磁兼容性设计，电磁环境可靠运行。

High strength plastic shell, light, durable; Removable side cover, easy for maintenance; Rear inner expansion locking, beautiful and stable; Suitable for  $\Phi 17-\Phi 19$  handlebar; Teflon high temperature resistant wire, suitable for various environments; EMC electromagnetic compatibility design, reliable operation in electromagnetic environment.

标准 /Approval	RoHS / REACH
尺寸 /Size	L138.5mm W41.5mm H55mm
重量 /Weight	105g
防水 /Waterproof	IPX4
材料 /Material	PC/ABS、TPR
芯线 /Wiring	5 Pins
电压 /Voltage	Working voltage 5v Output voltage 0.8-4.2V
工作温度 /Operating Temperature	-25°C ~ 65°C
电线拉脱力 /Wire Tension	$\geq 130N$
旋转角度 /Rotation Angle	0° ~ 70°
扭转强度 /Spin Intensity	$\geq 9N.m$
耐久性 /Durability	100,000 mating cycle



## FT158X+HT420

高强度塑胶外壳，轻巧、耐用；开放式侧盖，便于维修；尾部内胀式锁紧，美观稳固；适配把横管内径  $\Phi 17-\Phi 19$ ；铁氟龙耐高温电线，适应各种恶劣环境；EMC 电磁兼容性设计，电磁环境可靠运行。

High strength plastic shell, light, durable; Removable side cover, easy for maintenance; Rear inner expansion locking, beautiful and stable; Suitable for  $\Phi 17-\Phi 19$  handlebar; Teflon high temperature resistant wire, suitable for various environments; EMC electromagnetic compatibility design, reliable operation in electromagnetic environment.

标准 /Approval	RoHS / REACH
尺寸 /Size	L138.5mm W43.1mm H37mm
重量 /Weight	100g
防水 /Waterproof	IPX4
材料 /Material	PC/ABS、TPR
芯线 /Wiring	3 Pins
电压 /Voltage	Working voltage 5v Output voltage 0.8-4.2V
工作温度 /Operating Temperature	-25°C ~ 65°C
电线拉脱力 /Wire Tension	$\geq 130N$
旋转角度 /Rotation Angle	0° ~ 70°
扭转强度 /Spin Intensity	$\geq 9N.m$
耐久性 /Durability	100,000 mating cycle



## 158X+HT406

高强度塑胶外壳，轻巧、耐用；开放式侧盖，便于维修；尾部内胀式锁紧，美观稳固；适配把横管内径  $\Phi 17-\Phi 19$ ；铁氟龙耐高温电线，适应各种恶劣环境；EMC 电磁兼容性设计，电磁环境可靠运行。

High strength plastic shell, light, durable; Removable side cover, easy for maintenance; Rear inner expansion locking, beautiful and stable; Suitable for  $\Phi 17-\Phi 19$  handlebar; Teflon high temperature resistant wire, suitable for various environments; EMC electromagnetic compatibility design, reliable operation in electromagnetic environment.

标准 /Approval	RoHS / REACH
尺寸 /Size	L136.5mm W36mm H43mm
重量 /Weight	100g
防水 /Waterproof	IPX4
材料 /Material	PC/ABS、TPR
芯线 /Wiring	3 Pins
电压 /Voltage	Working voltage 5v Output voltage 0.8-4.2V
工作温度 /Operating Temperature	-25°C ~ 65°C
电线拉脱力 /Wire Tension	$\geq 130N$
旋转角度 /Rotation Angle	0° ~ 70°
扭转强度 /Spin Intensity	$\geq 9N.m$
耐久性 /Durability	100,000 mating cycle



## 158X/2+HT430

高强度塑胶外壳，轻巧、耐用；开放式侧盖，便于维修；尾部内胀式锁紧，美观稳固；适配把横管内径  $\Phi 17-\Phi 19$ ；铁氟龙耐高温电线，适应各种恶劣环境；EMC 电磁兼容性设计，电磁环境可靠运行。

High strength plastic shell, light, durable; Removable side cover, easy for maintenance; Rear inner expansion locking, beautiful and stable; Suitable for  $\Phi 17-\Phi 19$  handlebar; Teflon high temperature resistant wire, suitable for various environments; EMC electromagnetic compatibility design, reliable operation in electromagnetic environment.

标准 /Approval	RoHS / REACH
尺寸 /Size	L136.5mm W50mm H50mm
重量 /Weight	105g
防水 /Waterproof	IPX4
材料 /Material	PC/ABS、TPR
芯线 /Wiring	3 Pins
电压 /Voltage	Working voltage 5v Output voltage 0.8-4.2V
工作温度 /Operating Temperature	-25°C ~ 65°C
电线拉脱力 /Wire Tension	$\geq 130N$
旋转角度 /Rotation Angle	0° ~ 70°
扭转强度 /Spin Intensity	$\geq 9N.m$
耐久性 /Durability	100,000 mating cycle



## 122DX+HT418

电锁开关、安全操控；高强度塑胶外壳轻巧、耐用；夹紧式铝合金锁紧环，锁紧更稳固；4档电量显示，电量一目了然，欠压提醒；达到IPX4级防水性能；材料环保，RoHS、REACH认证

Electric lock switch, safety control; High strength plastic shell, light, Durable; Aluminum handlebar clamping loop with firm locking performance; 4 Speed levels, Low voltage alarm; IPX4 waterproof ability; Enviromental material, RoHS、REACH certification.

标准 /Approval	RoHS / REACH
尺寸 /Size	L150mm W66mm H85mm
重量 /Weight	130g
防水 /Waterproof	IPX4
材料 /Material	PC/ABS、PVC
芯线 /Wiring	6 Pins
电压 /Voltage	24V/36V/48V/60V
工作温度 /Operating Temperature	-25°C~ 65°C
电线拉脱力 /Wire Tension	≥130N
旋转角度 /Rotation Angle	0° ~ 70°
扭转强度 /Spin Intensity	≥9N.m
耐久性 /Durability	100,000 mating cycle



## 122DX/2+HT386

工艺可靠、性能稳定；高强度塑胶外壳轻巧、耐用；夹紧式铝合金锁紧环，锁紧更稳固；4档电量显示，电量一目了然，欠压提醒；达到IPX4级防水性能；材料环保，RoHS、REACH认证

Reliable technology, stable performance; High strength plastic shell, light, durable; Aluminum handlebar clamping loop with firm locking performance; 4 Speed levels, low voltage alarm; IPX4 waterproof ability; Enviromental material, RoHS、REACH certification.

标准 /Approval	RoHS / REACH
尺寸 /Size	L150mm W66mm H85mm
重量 /Weight	110g
防水 /Waterproof	IPX4
材料 /Material	PC/ABS、PVC
芯线 /Wiring	6 Pins
电压 /Voltage	24V/36V/48V/60V
工作温度 /Operating Temperature	-25°C~ 65°C
电线拉脱力 /Wire Tension	≥130N
旋转角度 /Rotation Angle	0° ~ 70°
扭转强度 /Spin Intensity	≥9N.m
耐久性 /Durability	100,000 mating cycle



## 122DX/3+HT386

电锁开关、安全操控；高强度塑胶外壳轻巧、耐用；夹紧式铝合金锁紧环，锁紧更稳固；模拟液晶显示效果，显高档；达到IPX4级防水性能；材料环保，RoHS、REACH认证

Electric lock switch, safety control; High strength plastic shell, light, Durable; Aluminum handlebar clamping loop with firm locking performance; Simulate LCD display effect; IPX4 waterproof ability; Enviromental material, RoHS、REACH certification.

标准 /Approval	RoHS / REACH
尺寸 /Size	L149mm W66mm H85mm
重量 /Weight	209g
防水 /Waterproof	IPX4
材料 /Material	PC/ABS、TPR
芯线 /Wiring	9 Pins
电压 /Voltage	24V/36V/48V/60V
工作温度 /Operating Temperature	-25°C~ 65°C
电线拉脱力 /Wire Tension	≥130N
旋转角度 /Rotation Angle	0° ~ 70°
扭转强度 /Spin Intensity	≥9N.m
耐久性 /Durability	100,000 mating cycle



## 122DX/4+HT450

电锁开关、安全操控；高强度塑胶外壳轻巧、耐用；夹紧式铝合金锁紧环，锁紧更稳固；模拟液晶显示效果，显高档；达到IPX4级防水性能；材料环保，RoHS、REACH认证

Electric lock switch, safety control; High strength plastic shell, light, Durable; Aluminum handlebar clamping loop with firm locking performance; Simulate LCD display effect; IPX4 waterproof ability; Enviromental material, RoHS、REACH certification.

标准 /Approval	RoHS / REACH
尺寸 /Size	L149mm W66mm H85mm
重量 /Weight	209g
防水 /Waterproof	IPX4
材料 /Material	PC/ABS、TPR
芯线 /Wiring	9 Pins
电压 /Voltage	DC 48V
工作温度 /Operating Temperature	-25°C~ 65°C
电线拉脱力 /Wire Tension	≥130N
旋转角度 /Rotation Angle	0° ~ 70°
扭转强度 /Spin Intensity	≥9N.m
耐久性 /Durability	100,000 mating cycle



## 198X+HT386

高强度塑胶外壳，轻巧、耐用；开放式侧盖，便于维修；夹紧式铝合金锁紧环，锁紧更稳固；铁氟龙耐高温电线，适应各种恶劣环境；EMC 电磁兼容性设计，电磁环境可靠运行；达到 IPX4 级防水性能。

High strength plastic shell, light, durable; Removable side cover, easy for maintenance; Aluminum handlebar clamping loop with firm locking performance; Teflon high temperature resistant wire, suitable for various environments; EMC electromagnetic compatibility design, reliable operation in electromagnetic environment; Reach IPX4 waterproof ability.

标准 /Approval	RoHS / REACH
尺寸 /Size	L130mm W62.5mm H50mm
重量 /Weight	130g
防水 /Waterproof	IPX4
材料 /Material	PC/ABS、PVC
芯线 /Wiring	5 Pins
电压 /Voltage	Working voltage 5v Output voltage 0.8-4.2V
工作温度 /Operating Temperature	-25°C ~ 65°C
电线拉脱力 /Wire Tension	≥130N
旋转角度 /Rotation Angle	0° ~ 70°
扭转强度 /Spin Intensity	≥9N.m
耐久性 /Durability	100,000 mating cycle



## 192X+HT418

高强度塑胶外壳，轻巧、耐用；开放式侧盖，便于维修；夹紧式铝合金锁紧环，锁紧更稳固；铁氟龙耐高温电线，适应各种恶劣环境；EMC 电磁兼容性设计，电磁环境可靠运行；达到 IPX4 级防水性能。

High strength plastic shell, light, durable; Removable side cover, easy for maintenance; Aluminum handlebar clamping loop with firm locking performance; Teflon high temperature resistant wire, suitable for various environments; EMC electromagnetic compatibility design, reliable operation in electromagnetic environment; Reach IPX4 waterproof ability.

标准 /Approval	RoHS / REACH
尺寸 /Size	L130mm W55mm H47mm
重量 /Weight	106g
防水 /Waterproof	IPX4
材料 /Material	PC/ABS、PVC
芯线 /Wiring	3 Pins
电压 /Voltage	Working voltage 5v Output voltage 0.8-4.2V
工作温度 /Operating Temperature	-25°C ~ 65°C
电线拉脱力 /Wire Tension	≥130N
旋转角度 /Rotation Angle	0° ~ 70°
扭转强度 /Spin Intensity	≥9N.m
耐久性 /Durability	100,000 mating cycle



## 112DX+HT386

工艺可靠、性能稳定；高强度塑胶外壳，轻巧、耐用；夹紧式铝合金锁紧环，锁紧更稳固；采用电镀工艺区域装饰，显高档、更美观；四挡电量显示，一目了然；达到 IPX4 级防水性能；材料环保，RoHS、REACH 认证。

Reliable technology, stable performance; High strength plastic shell, light, durable; Aluminum handlebar clamping loop with firm locking performance; Using electroplating technology for decorating, more upscale and beautiful; 4 Voltage levels; IPX4 waterproof ability; Environmental material, RoHS, REACH certification.

标准 /Approval	RoHS
尺寸 /Size	L150mm W31mm H67mm
重量 /Weight	145g
防水 /Waterproof	IPX4
材料 /Material	PC/ABS、PVC
芯线 /Wiring	6 Pins
电压 /Voltage	36V/48V/60V
工作温度 /Operating Temperature	-20°C ~ 60°C
电线拉脱力 /Wire Tension	≥130N
旋转角度 /Rotation Angle	0° ~ 70°
扭转强度 /Spin Intensity	≥9N.m
耐久性 /Durability	100,000 mating cycle



## 112X/2+HT386

工艺可靠、性能稳定；高强度塑胶外壳，轻巧、耐用；夹紧式铝合金锁紧环，锁紧更稳固；采用电镀工艺区域装饰，显高档、更美观；达到 IPX4 级防水性能；材料环保，RoHS、REACH 认证。

Reliable technology, stable performance; High strength plastic shell, light, durable; Aluminum handlebar clamping loop with firm locking performance; Using electroplating technology for decorating, more upscale and beautiful; IPX4 waterproof ability; Environmental material, RoHS, REACH certification.

标准 /Approval	RoHS / REACH
尺寸 /Size	L150mm W31mm H67mm
重量 /Weight	130g
防水 /Waterproof	IPX4
材料 /Material	PC/ABS、PVC
芯线 /Wiring	5 Pins
电压 /Voltage	Working voltage 5v Output voltage 0.8-4.2V
工作温度 /Operating Temperature	-25°C ~ 65°C
电线拉脱力 /Wire Tension	≥130N
旋转角度 /Rotation Angle	0° ~ 70°
扭转强度 /Spin Intensity	≥9N.m
耐久性 /Durability	100,000 mating cycle



## 108X/5.L/R

下挂式外形优美、大气；高强度塑胶外壳；开放式锁紧结构，操作方便；符合人体工程操作，超大按键区域，手感轻盈、舒适；达到 IPX7 级的防水能力；材料环保，RoHS、REACH 认证。

Hanging style, exquisite shape and elegant style; High strength plastic shell; Open locking design for easy assemble on Handlebar; Ergonomic operation, large key area, light and comfortable feel; IPX7 waterproof ability; Environmental material, RoHS, REACH certification.

标准 /Approvals	RoHS / REACH
尺寸 /Size	L50mm W52mm H59mm
重量 /Weight	45g
防水 /Waterproof	IPX7
材料 /Materials	PC/ABS
芯线 /Wiring	3 Pins/three core Wiring
电压 /Voltage	Working voltage 5v Output voltage 0.8-4.3V
工作温度 /Operating Temperature	-25°C~ 65°C
电线拉脱力 /Wire Tension	≥60N
旋转角度 /Rotation Angle	0° ~ 45°
扭转强度 /Spin Intensity	≥5N.m
产品寿命 /Product life	100,000 mating cycle



## 108X/4.L

下挂式外形优美、大气；高强度塑胶外壳；开放式锁紧结构，操作方便；符合人体工程操作，超大按键区域，手感轻盈、舒适；达到 IPX7 级的防水能力；材料环保，RoHS、REACH 认证。

Hanging style, exquisite shape and elegant style; High strength plastic shell; Open locking design for easy assemble on Handlebar; Ergonomic operation, large key area, light and comfortable feel; IPX7 waterproof ability; Environmental material, RoHS, REACH certification.

标准 /Approvals	RoHS / REACH
尺寸 /Size	L50mm W52mm H59mm
重量 /Weight	45g
防水 /Waterproof	IPX7
材料 /Materials	PC/ABS
芯线 /Wiring	3 Pins/three core Wiring
电压 /Voltage	Working voltage 5v Output voltage 0.8-4.3V
工作温度 /Operating Temperature	-25°C~ 65°C
电线拉脱力 /Wire Tension	≥60N
旋转角度 /Rotation Angle	0° ~ 45°
扭转强度 /Spin Intensity	≥5N.m
产品寿命 /Product life	100,000 mating cycle



## 108X/2

下挂式外形优美、大气；高强度塑胶外壳；开放式锁紧结构，操作方便；符合人体工程操作，超大按键区域，手感轻盈、舒适；达到 IPX7 级的防水能力；材料环保，RoHS、REACH 认证。

Hanging style, exquisite shape and elegant style; High strength plastic shell; Open locking design for easy assemble on Handlebar; Ergonomic operation, large key area, light and comfortable feel; IPX7 waterproof ability; Environmental material, RoHS, REACH certification.

标准 /Approval	RoHS / REACH
尺寸 /Size	L46mm W46mm H59mm
重量 /Weight	47g
防水 /Waterproof	IPX7
材料 /Material	PC/ABS、ABS
芯线 /Wiring	3 Pins
电压 /Voltage	Working voltage 5v Output voltage 0.8-4.2V
工作温度 /Operating Temperature	-25°C~ 65°C
电线拉脱力 /Wire Tension	≥60N
旋转角度 /Rotation Angle	0° ~ 45°
扭转强度 /Spin Intensity	≥5N.m
耐久性 /Durability	100,000 mating cycle



## 300X

产品外观简洁硬朗、符合人体工程操作、手感轻盈、舒适；主体选用 PA+GF 合金材料，综合性能好、抗冲击强度高；开放式锁紧结构，操作方便；达到 IPX5 级防水性能；材料环保，RoHS、REACH 认证。

Simple and strong structure, conforms to human engineering operation, and feels light and comfortable; The main body is made of PA+GF alloy material with good comprehensive performance and high impact strength; Open locking design for easy assemble on Handlebar; Reach IPX5 waterproof ability; Enviromental, and RoHS、REACH certification.

标准 /Approval	RoHS / REACH
尺寸 /Size	L67.5mm W24mm H55mm
重量 /Weight	35g
防水 /Waterproof	IPX5
材料 /Material	PA+GF
芯线 /Wiring	3 Pins
电压 /Voltage	Working voltage 5v Output voltage 0.8-4.2V
工作温度 /Operating Temperature	-25°C ~ 65°C
电线拉脱力 /Wire Tension	≥60N
旋转角度 /Rotation Angle	0° ~ 50°
扭转强度 /Spin Intensity	≥5N.m
耐久性 /Durability	100,000 mating cycle



## 188X

结构简单、工艺可靠、性能稳定；高强度塑胶外壳，轻巧、耐用；符合人体工程操作，超大按键区域，手感轻盈、舒适；铁氟龙耐高温电线，适应各种恶劣环境；材料环保，RoHS、REACH 认证；达到 IPX4 级的防水能力。

Simple structure, reliable technology, stable performance; High strength plastic shell, light, durable; Ergonomic operation, large key area, light and comfortable feel; Teflon high temperature resistant wire, suitable for various environments; Enviromental material, RoHS、REACH certification; IPX4 waterproof ability.

标准 /Approval	RoHS / REACH
尺寸 /Size	L62mm W33mm H63mm
重量 /Weight	46g
防水 /Waterproof	IPX4
材料 /Material	PC/ABS
芯线 /Wiring	5 Pins
电压 /Voltage	DC 5V
工作温度 /Operating Temperature	-25°C ~ 65°C
电线拉脱力 /Wire Tension	≥60N
旋转角度 /Rotation Angle	0° ~ 50°
扭转强度 /Spin Intensity	≥4N.m
耐久性 /Durability	100,000 mating cycle



## 106DX

高强度塑胶外壳；夹紧式铝合金锁紧环，锁紧更稳固；采用电镀工艺区域装饰，显高档、更美观；3 档电量显示，电量一目了然；符合人体工程操作，超大按键区域，手感轻盈、舒适；达到 IPX4 级的防水能力；材料环保，RoHS、REACH 认证。

High strength plastic shell; Aluminum handlebar clamping loop with firm locking performance; Using electroplating technology for decorating, more upscale and beautiful; 3 Voltage levels; Ergonomic operation, large key area, light and comfortable feel; IPX4 waterproof ability; Enviromental material, RoHS、REACH certification.

标准 /Approval	RoHS / REACH
尺寸 /Size	L69mm W69mm H30mm
重量 /Weight	46g
防水 /Waterproof	IPX4
材料 /Material	PC/ABS
芯线 /Wiring	6 Pins
电压 /Voltage	Working voltage 5v Output voltage 0.8-4.2V
工作温度 /Operating Temperature	-25°C ~ 65°C
电线拉脱力 /Wire Tension	≥60N
旋转角度 /Rotation Angle	0° ~ 53°
扭转强度 /Spin Intensity	≥5N.m
耐久性 /Durability	100,000 mating cycle



## 118DX+HT388

工艺可靠、性能稳定；PC/ABS 高强度塑胶外壳，轻巧、耐用；夹紧式铝合金锁紧环，锁紧更稳固；采用电镀工艺区域装饰，显高档、更美观；三档电量显示，一目了然；达到 IPX4 级防水性能；材料环保，RoHS、REACH 认证。

Reliable technology, stable performance; PC/High strength ABS shell, Light, Durable; Aluminum handlebar clamping loop with firm locking performance; Using electroplating technology for decorating, more upscale and beautiful; 3 Voltage levels; IPX4 waterproof ability; Enviromental material, RoHS、REACH certification.

标准 /Approval	RoHS / REACH
尺寸 /Size	L63.8mm W46mm H65mm
重量 /Weight	62g
防水 /Waterproof	IPX4
材料 /Material	PC/ABS、TPR
芯线 /Wiring	4 Pins
电压 /Voltage	24V/36V/48V/60V
工作温度 /Operating Temperature	-25°C ~ 65°C
电线拉脱力 /Wire Tension	≥130N
旋转角度 /Rotation Angle	0° ~ 70°
扭转强度 /Spin Intensity	≥9N.m
耐久性 /Durability	100,000 mating cycle



# ELECTRIC BRAKE LEVERS

刹把

# ELECTRIC BRAKE LEVERS

ELECTRIC BRAKE LEVERS



Simple structure, reliable process, stable performance ; Selected high-quality electronic switch ; Fully sealed, waterproof and dustproof structure ; Economical, environmentally friendly, energy-saving ; Enviromental, and RoHS certification.

结构简单、工艺可靠、性能稳定；选用优质电子开关；全密封防水防尘结构；经济、环保、节能；材料环保，RoHS 认证。

NEW

## 292PHD

结构简单、工艺可靠、性能稳定；霍尔断电，锁紧板带开关控制功能，可选配带开关或不带开关；全密封防水防尘结构；达到 IPX7 级防水能力。  
Simple structure, reliable process, stable performance ; With Hall Cut off function, Optional button function on Locking bracket; Fully sealed, waterproof and dustproof structure; Reach IPX7 waterproof ability.

标准 /Approval	RoHS / REACH
尺寸 /Size	L188mm W55mm H115mm
重量 /Weight	186g
防水 /Waterproof	IPX7
材料 /Material	A356、L6061、ABS
芯线 /Wiring	Brake levers / Switches:3 Pins
电压 /Voltage	Working voltage 5V Output voltage 0.8-4.3V
开关通流 /Switch Current	50mA/12V
工作温度 /Operating Temperature	-25°C~ 65°C
抗拉力 /Stretching Resistance	≥300N
耐久性 /Durability	Brake levers : 200,000 mating cycle Switches: 50,000 mating cycle



ELECTRIC BRAKE LEVERS

## 288PHD

结构简单、工艺可靠、性能稳定；霍尔断电和开关断电可选；全密封防水防尘结构；达到 IPX7 级防水能力。

Simple structure, reliable process, stable performance ; Optional On-off via Hall effect or switch; Fully sealed, waterproof and dustproof structure; Reach IPX7 waterproof ability.

标准 /Approval	RoHS / REACH
尺寸 /Size	L143mm W106mm H72mm
重量 /Weight	125g
防水 /Waterproof	IPX7
材料 /Material	Aluminum alloy
芯线 /Wiring	3 Pins
电压 /Voltage	Working voltage 5V Output voltage 0.8-4.3V
工作温度 /Operating Temperature	-25°C~ 65°C
抗拉力 /Stretching Resistance	≥300N
耐久性 /Durability	100,000 mating cycle



## 282PDD+BS232+LD08

开关断电和霍尔断电可选；达到 IPX7 级防水能力；加配响铃配置。

Optional high-quality electronic switch; Optional Hall linear output, stable voltage ; Reach IPX7 waterproof ability; Equipped with bell configuration.

标准 /Approval	RoHS / REACH
尺寸 /Size	L143mm W106mm H72mm
重量 /Weight	125g
防水 /Waterproof	IPX7
材料 /Material	Aluminum alloy
芯线 /Wiring	2 Pins
电流 /Current	1A(MAX)
工作温度 /Operating Temperature	-25°C~ 65°C
抗拉力 /Stretching Resistance	≥300N
耐久性 /Durability	100,000 mating cycle



## 286PDD

结构简单、工艺可靠、性能稳定；可选优质电子开关；全密封防水防尘结构；达到 IPX7 级防水能力。

Simple structure, reliable process, stable performance ; Optional high-quality electronic switch; Fully sealed, waterproof and dustproof structure; Reach IPX7 waterproof ability.

标准 /Approval	RoHS / REACH
尺寸 /Size	L143mm W106mm H72mm
重量 /Weight	125g
防水 /Waterproof	IPX7
材料 /Material	Aluminum alloy
芯线 /Wiring	2 Pins
电流 /Current	1A(MAX)
工作温度 /Operating Temperature	-25°C~ 65°C
抗拉力 /Stretching Resistance	≥300N
耐久性 /Durability	100,000 mating cycle



## 278PDD+BS278

结构简单、工艺可靠、性能稳定；可选优质电子开关；全密封防水防尘结构。

Simple structure, reliable process, stable performance ; Optional high-quality electronic switch; Fully sealed, waterproof and dustproof structure.

标准 /Approval	RoHS / REACH
尺寸 /Size	L136mm W30.4mm H87.7mm
重量 /Weight	120g
防水 /Waterproof	IPX7
材料 /Material	Aluminum alloy
芯线 /Wiring	2 Pins
电流 /Current	1A(MAX)
工作温度 /Operating Temperature	-25°C~ 65°C
抗拉力 /Stretching Resistance	≥450N
耐久性 /Durability	100,000 mating cycle



儿童款

## 268PHD.L+BS130.L

结构简单、工艺可靠、性能稳定；霍尔线性输出电压稳定；加配铃铛配置；达到IPX6防水能力。

Simple structure, reliable process, stable performance ; Hall linear output, stable voltage ; Equipped with bell configuration; Reach IPX6 waterproof ability.

标准 /Approval	RoHS / REACH
尺寸 /Size	L141mm W114mm H60mm
重量 /Weight	125g
防水 /Waterproof	IPX6
材料 /Material	Aluminum alloy
芯线 /Wiring	3 Pins
电压 /Voltage	Working voltage 5V Output voltage 0.8-4.3V
工作温度 /Operating Temperature	-25°C~ 65°C
抗拉力 /Stretching Resistance	≥450N
耐久性 /Durability	100,000 mating cycle



## 240PDD+BS240

结构简单、工艺可靠、性能稳定；选用优质电子开关；加配铃铛配置；全密封防水防尘结构。

Simple structure, reliable process, stable performance ; Selected high-quality electronic switch; Equipped with bell configuration; Fully sealed, waterproof and dustproof structure.

标准 /Approval	RoHS / REACH
尺寸 /Size	L136.4mm W40.7mm H92.3mm
重量 /Weight	125g
防水 /Waterproof	IPX7
材料 /Material	Aluminum alloy
芯线 /Wiring	2 Pins
电流 /Current	1A(MAX)
工作温度 /Operating Temperature	-25°C~ 65°C
抗拉力 /Stretching Resistance	≥450N
耐久性 /Durability	100,000 mating cycle



## 268PHD.R+BS130.R

结构简单、工艺可靠、性能稳定；霍尔线性输出电压稳定；全密封防水防尘结构。

Simple structure, reliable process, stable performance ; Hall linear output, stable voltage ; Fully sealed, waterproof and dustproof structure.

标准 /Approval	RoHS / REACH
尺寸 /Size	L143mm W100mm H35mm
重量 /Weight	115g
防水 /Waterproof	IPX6
材料 /Material	Aluminum alloy+ABS
芯线 /Wiring	3 Pins
电压 /Voltage	Working voltage 5V Output voltage 0.8-4.3V
工作温度 /Operating Temperature	-25°C~ 65°C
抗拉力 /Stretching Resistance	≥450N
耐久性 /Durability	100,000 mating cycle



## 246PDD+BS246

结构简单、工艺可靠、性能稳定；选用优质电子开关；全密封防水防尘结构。  
Simple structure, reliable process, stable performance ; Selected high-quality electronic switch; Fully sealed, waterproof and dustproof structure.

标准 /Approval	RoHS / REACH
尺寸 /Size	L156mm W40mm H110mm
重量 /Weight	135g
防水 /Waterproof	IPX7
材料 /Material	Aluminum alloy
芯线 /Wiring	2 Pins
电流 /Current	1A(MAX)
工作温度 /Operating Temperature	-25°C~ 65°C
抗拉力 /Stretching Resistance	≥450N
耐久性 /Durability	100,000 mating cycle



## 188PHD/2+BS188/2

结构简单、工艺可靠、性能稳定；霍尔线性输出电压稳定；全密封防水防尘结构。  
Simple structure, reliable process, stable performance ; Hall linear output, stable voltage ; Fully sealed, waterproof and dustproof structure.

标准 /Approval	RoHS / REACH
尺寸 /Size	L116mm W113mm H46mm
重量 /Weight	130g
防水 /Waterproof	IPX7
材料 /Material	Aluminum alloy
芯线 /Wiring	3 Pins
电压 /Voltage	Working voltage 5V Output voltage 0.8-4.3V
工作温度 /Operating Temperature	-25°C~ 65°C
抗拉力 /Stretching Resistance	≥450N
耐久性 /Durability	100,000 mating cycle



## 240PDD/2+BS240

结构简单、工艺可靠、性能稳定；选用优质电子开关；全密封防水防尘结构。  
Simple structure, reliable process, stable performance ; Selected high-quality electronic switch; Fully sealed, waterproof and dustproof structure.

标准 /Approval	RoHS / REACH
尺寸 /Size	L136.4mm W40.7mm H92.3mm
重量 /Weight	125g
防水 /Waterproof	IPX7
材料 /Material	Aluminum alloy
芯线 /Wiring	2 Pins
电流 /Current	1A(MAX)
工作温度 /Operating Temperature	-25°C~ 65°C
抗拉力 /Stretching Resistance	≥450N
耐久性 /Durability	100,000 mating cycle



## 182PHD/2

结构简单、工艺可靠、性能稳定；霍尔线性输出电压稳定；全密封防水防尘结构。  
Simple structure, reliable process, stable performance ; Hall linear output, stable voltage ; Fully sealed, waterproof and dustproof structure.

标准 /Approval	RoHS / REACH
尺寸 /Size	L136.4mm W40.7mm H92.3mm
重量 /Weight	125g
防水 /Waterproof	IPX7
材料 /Material	Aluminum alloy
芯线 /Wiring	3 Pins
电压 /Voltage	Working voltage 5V Output voltage 0.8-4.3V
工作温度 /Operating Temperature	-25°C~ 65°C
抗拉力 /Stretching Resistance	≥450N
耐久性 /Durability	100,000 mating cycle



## 172PHD+BS172

结构简单、工艺可靠、性能稳定；霍尔线性输出电压稳定；全密封防水防尘结构。  
Simple structure, reliable process, stable performance ; Hall linear output, stable voltage ; Fully sealed, waterproof and dustproof structure.

标准 /Approval	RoHS / REACH
尺寸 /Size	L134.2mm W85.5mm H31mm
重量 /Weight	130g
防水 /Waterproof	IPX5
材料 /Material	Aluminum alloy
芯线 /Wiring	3 Pins
电压 /Voltage	Working voltage 5V Output voltage 0.8-4.3V
工作温度 /Operating Temperature	-25°C~ 65°C
抗拉力 /Stretching Resistance	≥450N
耐久性 /Durability	100,000 mating cycle



## 170PHD+BS172

结构简单、工艺可靠、性能稳定；霍尔线性输出电压稳定；全密封防水防尘结构。  
Simple structure, reliable process, stable performance ; Hall linear output, stable voltage ; Fully sealed, waterproof and dustproof structure.

标准 /Approval	RoHS / REACH
尺寸 /Size	L150mm W100mm H34mm
重量 /Weight	120g
防水 /Waterproof	IPX5
材料 /Material	Aluminum alloy
芯线 /Wiring	3 Pins
电压 /Voltage	Working voltage 5V Output voltage 0.8-4.3V
工作温度 /Operating Temperature	-25°C~ 65°C
抗拉力 /Stretching Resistance	≥450N
耐久性 /Durability	100,000 mating cycle



## 170PHD+BS162/2+LD06

结构简单、工艺可靠、性能稳定；霍尔线性输出电压稳定；加配铃铛配置；全密封防水防尘结构。

Simple structure, reliable process, stable performance ; Hall linear output, stable voltage ; Equipped with bell configuration; Fully sealed, waterproof and dustproof structure.

标准 /Approval	RoHS / REACH
尺寸 /Size	L150mm W100mm H60mm
重量 /Weight	130g
防水 /Waterproof	IPX5
材料 /Material	Aluminum alloy
芯线 /Wiring	3 Pins
电压 /Voltage	Working voltage 5V Output voltage 0.8-4.3V
工作温度 /Operating Temperature	-25°C~ 65°C
抗拉力 /Stretching Resistance	≥450N
耐久性 /Durability	100,000 mating cycle



## 112PDD+BS112

结构简单、工艺可靠、性能稳定；选用优质电子开关；全密封防水防尘结构。  
Simple structure, reliable process, stable performance ; Selected high-quality electronic switch; Fully sealed, waterproof and dustproof structure.

标准 /Approval	RoHS / REACH
尺寸 /Size	L170mm W102mm H34mm
重量 /Weight	115g
防水 /Waterproof	IPX5
材料 /Material	Aluminum alloy
芯线 /Wiring	2 Pins
电流 /Current	1A(MAX)
工作温度 /Operating Temperature	-25°C~ 65°C
抗拉力 /Stretching Resistance	≥450N
耐久性 /Durability	100,000 mating cycle



## 110P+BS110

结构简单、工艺可靠、性能稳定；把手采用锻造工艺。  
Simple structure, reliable process, stable performance ;

**Forging brake lever.**

标准 /Approval	RoHS / REACH
尺寸 /Size	L172mm W86.5mm H31mm
重量 /Weight	125g
材料 /Material	Aluminum alloy
工作温度 /Operating Temperature	-25°C~ 65°C
抗拉力 /Stretching Resistance	≥450N
耐久性 /Durability	100,000 mating cycle



## 112PDD/3+BS112/3

结构简单、工艺可靠、性能稳定；选用优质电子开关；全密封防水防尘结构。  
Simple structure, reliable process, stable performance ; Selected high-quality electronic switch; Fully sealed, waterproof and dustproof structure.

标准 /Approval	RoHS / REACH
尺寸 /Size	L153.3mm W85.4mm H39mm
重量 /Weight	115g
防水 /Waterproof	IPX7
材料 /Material	Aluminum alloy
芯线 /Wiring	2 Pins
电流 /Current	1A(MAX)
工作温度 /Operating Temperature	-25°C~ 65°C
抗拉力 /Stretching Resistance	≥450N
耐久性 /Durability	100,000 mating cycle



## 108PDD/4+BS108

结构简单、工艺可靠、性能稳定；选用优质电子开关；全密封防水防尘结构。  
Simple structure, reliable process, stable performance ; Selected high-quality electronic switch; Fully sealed, waterproof and dustproof structure.

Simple structure, reliable process, stable performance ; Selected high-quality electronic switch; Fully sealed, waterproof and dustproof structure.

标准 /Approval	RoHS / REACH
尺寸 /Size	L170mm W105mm H34mm
重量 /Weight	125g
防水 /Waterproof	IPX6
材料 /Material	Aluminum alloy
芯线 /Wiring	2 Pins
电流 /Current	1A(MAX)
工作温度 /Operating Temperature	-25°C~ 65°C
抗拉力 /Stretching Resistance	≥450N
耐久性 /Durability	100,000 mating cycle



## 108PDD+BS108

结构简单、工艺可靠、性能稳定；选用优质电子开关；全密封防水防尘结构。  
Simple structure, reliable process, stable performance ; Selected high-quality electronic switch; Fully sealed, waterproof and dustproof structure.

标准 /Approval	RoHS / REACH
尺寸 /Size	L156mm W105mm H34mm
重量 /Weight	120g
防水 /Waterproof	IPX6
材料 /Material	Aluminum alloy
芯线 /Wiring	2 Pins
电流 /Current	1A(MAX)
工作温度 /Operating Temperature	-25°C~ 65°C
抗拉力 /Stretching Resistance	≥450N
耐久性 /Durability	100,000 mating cycle



## 99PDD+BS100

结构简单、工艺可靠、性能稳定；选用优质电子开关；全密封防水防尘结构。  
Simple structure, reliable process, stable performance ; Selected high-quality electronic switch; Fully sealed, waterproof and dustproof structure.

标准 /Approval	RoHS / REACH
尺寸 /Size	L150.5mm W85.4mm H37.8mm
重量 /Weight	65g
防水 /Waterproof	IPX4
材料 /Material	PA6+GF
芯线 /Wiring	2 Pins
电流 /Current	1A(MAX)
工作温度 /Operating Temperature	-25°C~ 65°C
抗拉力 /Stretching Resistance	≥450N
耐久性 /Durability	100,000 mating cycle



## 108PDD+BS106/2

结构简单、工艺可靠、性能稳定；选用优质电子开关；全密封防水防尘结构。  
Simple structure, reliable process, stable performance ; Selected high-quality electronic switch; Fully sealed, waterproof and dustproof structure.

标准 /Approval	RoHS / REACH
尺寸 /Size	L156mm W102mm H34mm
重量 /Weight	125g
防水 /Waterproof	IPX5
材料 /Material	Aluminum alloy
芯线 /Wiring	2 Pins
电流 /Current	1A(MAX)
工作温度 /Operating Temperature	-25°C~ 65°C
抗拉力 /Stretching Resistance	≥450N
耐久性 /Durability	100,000 mating cycle



## 99PDD/2+BS100

结构简单、工艺可靠、性能稳定；选用优质电子开关；全密封防水防尘结构。  
Simple structure, reliable process, stable performance ; Selected high-quality electronic switch; Fully sealed, waterproof and dustproof structure.

标准 /Approval	RoHS / REACH
尺寸 /Size	L150.5mm W85.4mm H37.8mm
重量 /Weight	65g
防水 /Waterproof	IPX7
材料 /Material	PA6+GF
芯线 /Wiring	2 Pins
电流 /Current	1A(MAX)
工作温度 /Operating Temperature	-25°C~ 65°C
抗拉力 /Stretching Resistance	≥450N
耐久性 /Durability	100,000 mating cycle



# SWITCHES

电控器



结构简单、工艺可靠、性能稳定；内外出线配置可选；LED 发光按键版本可选，夜间更清晰高亮；达到 IPX6 级防水能力；材料环保，RoHS 认证。

Simple structure, reliable technology, stable performance; The inner wiring mode is adopted, and the horizontal pipe can be arranged in compliance, which is more beautiful; External wiring is adopted, freematching and non-interference; Customized LED button; IPX6 waterproof ability; Environmental material, RoHS certification.

## DK700

结构简单、工艺可靠、性能稳定；  
符合人体工程操作，手感轻盈、舒适；  
达到 IPX6 级防水能力；材料环保，RoHS、REACH 认证。

Simple structure, reliable technology, stable performance;  
Conforming to ergonomic operation, light and comfortable;  
IPX6 waterproof ability; Environmental material, RoHS、REACH certification.

标准 /Approval	RoHS / REACH
尺寸 /Size	L48mm W45mm H52mm
重量 /Weight	45g
防水 /Waterproof	IPX6
材料 /Material	PC/ABS
芯线 /Wiring	8 Pins
电流 /Current	50mA/12V DC
工作温度 /Operating Temperature	-25°C~ 65°C
电线拉脱力 /Wire Tension	≥130N
耐久性 /Durability	10,0000 mating cycle



## DK550

结构简单、工艺可靠、性能稳定；PC/ABS 高强度塑胶外壳；  
夹紧式铝合金锁紧环，锁紧更稳固；达到 IPX6 级防水能力；  
材料环保，RoHS、REACH 认证。

Simple structure, reliable technology, stable performance;  
High strength PC/ABS shell, Light, durable;  
Aluminum handlebar clamping loop with firm locking performance;  
IPX6 waterproof ability; Environmental material, RoHS、REACH certification.

标准 /Approval	RoHS / REACH
尺寸 /Size	L39mm W59mm H50mm
重量 /Weight	50g
防水 /Waterproof	IPX6
材料 /Material	PC/ABS
芯线 /Wiring	6 Pins
电流 /Current	50mA/12V DC
工作温度 /Operating Temperature	-25°C~ 65°C
电线拉脱力 /Wire Tension	≥80N
耐久性 /Durability	10,0000 mating cycle



## DK370

结构简单、工艺可靠、性能稳定；PC/ABS 高强度塑胶外壳 + 硅胶按键；  
开放式锁紧结构，操作方便；达到 IPX6 级防水能力；  
材料环保，RoHS、REACH 认证。

Simple structure, reliable technology, stable performance;  
High strength PC/ABS shell, Silicon button;  
Open locking design for easy assemble on Handlebar;  
IPX6 waterproof ability; Environmental material, RoHS、REACH certification.

标准 /Approval	RoHS / REACH
尺寸 /Size	L39mm W28.5mm H48mm
重量 /Weight	36g
防水 /Waterproof	IPX6
材料 /Material	PC/ABS、硅胶
芯线 /Wiring	5 Pins
电流 /Current	50mA/12V DC
工作温度 /Operating Temperature	-25°C~ 65°C
电线拉脱力 /Wire Tension	≥100N
耐久性 /Durability	10,000 mating cycle



## DK366

结构简单、工艺可靠、性能稳定；PC/ABS 高强度塑胶外壳；  
开放式锁紧结构，操作方便；达到 IPX6 级防水能力；  
材料环保，RoHS、REACH 认证。

Simple structure, reliable technology, stable performance;  
High strength PC/ABS shell, Light, durable;  
Open locking design for easy assemble on Handlebar;  
IPX6 waterproof ability; Environmental material, RoHS、REACH certification.

标准 /Approval	RoHS / REACH
尺寸 /Size	L50mm W23mm H47mm
重量 /Weight	26g
防水 /Waterproof	IPX6
材料 /Material	PC/ABS
芯线 /Wiring	4 Pins
电流 /Current	50mA/12V DC
工作温度 /Operating Temperature	-25°C~ 65°C
电线拉脱力 /Wire Tension	≥60N
耐久性 /Durability	10,000 mating cycle



## DK268

结构简单、工艺可靠、性能稳定；PC/ABS 高强度塑胶外壳 + 硅胶按键；  
开放式锁紧结构，操作方便；达到 IPX6 级防水能力；  
材料环保，RoHS、REACH 认证。

Simple structure, reliable technology, stable performance;  
High strength PC/ABS shell, Silicon button;  
Open locking design for easy assemble on Handlebar;  
IPX6 waterproof ability; Environmental material, RoHS、REACH certification.

标准 /Approval	RoHS / REACH
尺寸 /Size	L39mm W28.5mm H48mm
重量 /Weight	35g
防水 /Waterproof	IPX6
材料 /Material	PC/ABS、硅胶
芯线 /Wiring	4 Pins
电流 /Current	50mA/12V DC
工作温度 /Operating Temperature	-25°C~ 65°C
电线拉脱力 /Wire Tension	≥100N
耐久性 /Durability	10,000 mating cycle



## DK356

结构简单、工艺可靠、性能稳定；内外出线配置可选；LED 发光按键版本可选，夜间更清晰高亮；达到 IPX6 级防水能力；材料环保，RoHS、REACH 认证。

Simple structure, reliable technology, stable performance; The inner wiring mode is adopted, and the horizontal pipe can be arranged in compliance, which is more beautiful; External wiring is adopted, freematching and non-interference; Customized LED button; IPX6 waterproof ability; Environmental material, RoHS、REACH certification.

标准 /Approval	RoHS / REACH
尺寸 /Size	L36mm W59mm H50mm
重量 /Weight	45g
防水 /Waterproof	IPX6
材料 /Material	PC/ABS
芯线 /Wiring	5/7 Pins
电流 /Current	50mA/12V DC
工作温度 /Operating Temperature	-25°C~ 65°C
电线拉脱力 /Wire Tension	≥80N
耐久性 /Durability	10,000 mating cycle



## DK410

结构简单、工艺可靠、性能稳定；PC/ABS 高强度塑胶外壳；夹紧式铝合金锁紧环，锁紧更稳固；采用电镀工艺区域装饰，显高档、更美观；达到 IPX4 级防水能力；材料环保，RoHS、REACH 认证。

Simple structure, reliable technology, stable performance; High strength PC/ABS shell, light, durable; Aluminum handlebar clamping loop with firm locking performance; Using electroplating technology for decorating, more upscale and beautiful; IPX4 waterproof ability; Environmental material, RoHS、REACH certification.

标准 /Approval	RoHS
尺寸 /Size	L85mm W35mm H57mm
防水 /Waterproof	IPX4
材料 /Material	PC/ABS
芯线 /Wiring	9 Pins
电流 /Current	3A/12V DC
工作温度 /Operating Temperature	-20°C~ 80°C
电线拉脱力 /Wire Tension	≥130N
耐久性 /Durability	10,000 mating cycle



## DK314

结构简单、工艺可靠、性能稳定；PC/ABS 高强度塑胶外壳；夹紧式铝合金锁紧环，锁紧更稳固；采用电镀工艺区域装饰，显高档、更美观；达到 IPX4 级防水能力；材料环保，RoHS、REACH 认证。

Simple structure, reliable technology, stable performance; High strength PC/ABS shell, light, durable; Aluminum handlebar clamping loop with firm locking performance; Using electroplating technology for decorating, more upscale and beautiful; IPX4 waterproof ability; Environmental material, RoHS、REACH certification.

标准 /Approval	RoHS / REACH
尺寸 /Size	L34.5mm W54.2mm H79.6mm
防水 /Waterproof	IPX4
材料 /Material	PC/ABS
芯线 /Wiring	7 Pins
电流 /Current	3A/12V DC
工作温度 /Operating Temperature	-25°C~ 65°C
电线拉脱力 /Wire Tension	≥130N
耐久性 /Durability	10,000 mating cycle



## DK324

结构简单、工艺可靠、性能稳定；PC/ABS 高强度塑胶外壳；夹紧式铝合金锁紧环，锁紧更稳固；采用电镀工艺区域装饰，显高档、更美观；达到 IPX4 级防水能力；材料环保，RoHS、REACH 认证。

Simple structure, reliable technology, stable performance; High strength PC/ABS shell, light, durable; Aluminum handlebar clamping loop with firm locking performance; Using electroplating technology for decorating, more upscale and beautiful; IPX4 waterproof ability; Environmental material, RoHS、REACH certification.

标准 /Approval	RoHS / REACH
尺寸 /Size	L80mm W32mm H55mm
重量 /Weight	43g
防水 /Waterproof	IPX4
材料 /Material	PC/ABS
芯线 /Wiring	7 Pins
电流 /Current	3A/12V DC
工作温度 /Operating Temperature	-25°C~ 65°C
电线拉脱力 /Wire Tension	≥130N
耐久性 /Durability	10,000 mating cycle



## DK252

结构简单、工艺可靠、性能稳定；PA6+20GF 高强度塑胶外壳；铁氟龙耐高温电线，适应各种恶劣环境；达到 IPX7 级防水能力；材料环保，RoHS、REACH 认证。

Simple structure, reliable technology, stable performance; High strength PA6+20GF shell, Light, durable; Teflon high temperature resistant wire, suitable for various environments; IPX7 waterproof ability; Environmental material, RoHS、REACH certification.

标准 /Approval	RoHS / REACH
尺寸 /Size	L61mm W37mm H38mm
重量 /Weight	26g
防水 /Waterproof	IPX7
材料 /Material	PC/ABS
芯线 /Wiring	4 Pins
电流 /Current	50mA/12V DC
工作温度 /Operating Temperature	-25°C~ 65°C
电线拉脱力 /Wire Tension	≥130N
耐久性 /Durability	10,000 mating cycle



## DK266

结构简单、工艺可靠、性能稳定；内外出线配置可选；按键手感轻盈、舒适；达到 IPX7 级防水能力；材料环保，RoHS、REACH 认证。

Simple structure, reliable technology, stable performance; The inner wiring mode is adopted, and the horizontal pipe can be arranged in compliance, which is more beautiful; Conforming to ergonomic operation, light and comfortable; IPX7 waterproof ability; Environmental material, RoHS、REACH certification.

标准 /Approval	RoHS / REACH
尺寸 /Size	L44mm W38mm H60.5mm
重量 /Weight	36.9g
防水 /Waterproof	IPX7
材料 /Material	PC/ABS 硅胶
芯线 /Wiring	3 Pins
电流 /Current	50mA/12V DC
工作温度 /Operating Temperature	-25°C ~ 65°C
电线拉脱力 /Wire Tension	≥130N
耐久性 /Durability	10,000 mating cycle



NEW

## DK256/2

结构简单、工艺可靠、性能稳定；PC/ABS 高强度塑胶外壳；夹紧式铝合金锁紧环，锁紧更稳固；达到 IPX5 级防水能力；材料环保，RoHS、REACH 认证。

Simple structure, reliable technology, stable performance; High strength PC/ABS shell, Light, durable; Aluminum handlebar clamping loop with firm locking performance; IPX5 waterproof ability; Environmental material, RoHS、REACH certification.

标准 /Approval	RoHS / REACH
尺寸 /Size	L60mm W26mm H65mm
重量 /Weight	40g
防水 /Waterproof	IPX5
材料 /Material	ABS
芯线 /Wiring	5 Pins
电流 /Current	3A/12V DC
工作温度 /Operating Temperature	-25°C ~ 65°C
电线拉脱力 /Wire Tension	≥130N
耐久性 /Durability	10,000 mating cycle



## DK256/3

结构简单、工艺可靠、性能稳定；PC/ABS 高强度塑胶外壳；夹紧式铝合金锁紧环，锁紧更稳固；采用内走线匹配 U 性管；达到 IPX5 级防水能力；材料环保，RoHS、REACH 认证。

Simple structure, reliable technology, stable performance; High strength PC/ABS shell, light, durable; Aluminum handlebar clamping loop with firm locking performance; The inner wiring mode is adopted, and the horizontal pipe can be arranged in compliance, which is more beautiful; IPX5 waterproof ability; Environmental material, RoHS、REACH certification.

标准 /Approval	RoHS / REACH
尺寸 /Size	L60mm W26mm H65mm
重量 /Weight	40g
防水 /Waterproof	IPX5
材料 /Material	ABS
芯线 /Wiring	5 Pins
电流 /Current	3A/12V DC
工作温度 /Operating Temperature	-25°C ~ 65°C
电线拉脱力 /Wire Tension	≥130N
耐久性 /Durability	10,000 mating cycle



## DK260

结构简单、工艺可靠、性能稳定；内外出线配置可选；LED 发光按键版本可选，夜间更清晰高亮；达到 IPX6 级防水能力；材料环保，RoHS、REACH 认证。

Simple structure, reliable technology, stable performance; The inner wiring mode is adopted, and the horizontal pipe can be arranged in compliance, which is more beautiful; External wiring is adopted, freematching and non-interference; Customized LED button; IPX6 waterproof ability; Environmental material, RoHS、REACH certification.

标准 /Approval	RoHS / REACH
尺寸 /Size	L23mm W56mm H40mm
重量 /Weight	40g
防水 /Waterproof	IPX6
材料 /Material	PC/ABS
芯线 /Wiring	4/6 Pins
电流 /Current	50mA/12V DC
工作温度 /Operating Temperature	-25°C~ 65°C
电线拉脱力 /Wire Tension	≥80N
耐久性 /Durability	10,000 mating cycle



## DK168

结构简单、工艺可靠、性能稳定；内外出线配置可选；LED 发光按键版本可选，夜间更清晰高亮；达到 IPX6 级防水能力；材料环保，RoHS、REACH 认证。

Simple structure, reliable technology, stable performance; The inner wiring mode is adopted, and the horizontal pipe can be arranged in compliance, which is more beautiful; External wiring is adopted, freematching and non-interference; Customized LED button; IPX6 waterproof ability; Environmental material, RoHS、REACH certification.

标准 /Approval	RoHS / REACH
尺寸 /Size	L38mm W45mm H60mm
重量 /Weight	35g
防水 /Waterproof	IPX6
材料 /Material	PC/ABS
芯线 /Wiring	3/5 Pins
电流 /Current	50mA/12V DC
工作温度 /Operating Temperature	-25°C~ 65°C
电线拉脱力 /Wire Tension	≥80N
耐久性 /Durability	10,000 mating cycle



## DK224

结构简单、工艺可靠、性能稳定；PC/ABS 高强度塑胶外壳；夹紧式铝合金锁紧环，锁紧更稳固；采用电镀工艺区域装饰，显高档、更美观；达到 IPX4 级防水能力；材料环保，RoHS 认证。

Simple structure, reliable technology, stable performance; High strength PC/ABS shell, light, durable; Aluminum handlebar clamping loop with firm locking performance; Using electroplating technology for decorating, more upscale and beautiful; IPX4 waterproof ability; Environmental material, RoHS certification.

标准 /Approval	RoHS / REACH
尺寸 /Size	L73mm W55mm H33mm
重量 /Weight	37g
防水 /Waterproof	IPX4
材料 /Material	PC/ABS
芯线 /Wiring	4 Pins
电流 /Current	3A/12V DC
工作温度 /Operating Temperature	-25°C~ 65°C
电线拉脱力 /Wire Tension	≥130N
耐久性 /Durability	10,000 mating cycle



## DK214

结构简单、工艺可靠、性能稳定；PC/ABS 高强度塑胶外壳；夹紧式铝合金锁紧环，锁紧更稳固；采用电镀工艺区域装饰，显高档、更美观；达到 IPX4 级防水能力；材料环保，RoHS、REACH 认证。

Simple structure, reliable technology, stable performance; High strength PC/ABS shell, light, durable; Aluminum handlebar clamping loop with firm locking performance; Using electroplating technology for decorating, more upscale and beautiful; IPX4 waterproof ability; Environmental material, RoHS、REACH certification.

标准 /Approval	RoHS / REACH
尺寸 /Size	L34.5mm W54.2mm H66.8mm
防水 /Waterproof	IPX4
材料 /Material	PC/ABS
芯线 /Wiring	4 Pins
电流 /Current	3A/12V DC
工作温度 /Operating Temperature	-25°C~ 65°C
电线拉脱力 /Wire Tension	≥130N
耐久性 /Durability	10,000 mating cycle



## DK170

结构简单、工艺可靠、性能稳定；  
符合人体工程操作，手感轻盈、舒适；  
达到 IPX4 级防水能力；材料环保，RoHS、REACH 认证。

Simple structure, reliable technology, stable performance;  
Ergonomic, lightweight and comfortable;  
IPX4 waterproof ability; Enviromental material, RoHS、REACH certification.

标准 /Approval	RoHS / REACH
尺寸 /Size	L59mm W26mm H36mm
重量 /Weight	57g
防水 /Waterproof	IPX4
材料 /Material	Aluminum alloy
芯线 /Wiring	3 Pins
电流 /Current	10A 125V AC (6A 250V AC)
工作温度 /Operating Temperature	-25°C~ 65°C
电线拉脱力 /Wire Tension	≥80N
耐久性 /Durability	10,0000 mating cycle



## DK156

结构简单、工艺可靠、性能稳定；  
符合人体工程操作，手感轻盈、舒适；  
达到 IPX7 级防水能力；材料环保，RoHS、REACH 认证。

Simple structure, reliable technology, stable performance;  
Ergonomic, lightweight and comfortable;  
IPX7 waterproof ability; Enviromental material, RoHS、REACH certification.

标准 /Approval	RoHS / REACH
尺寸 /Size	L29mm W16mm H14mm
重量 /Weight	10g
防水 /Waterproof	IPX7
材料 /Material	PC/ABS、硅胶
芯线 /Wiring	2 Pins
电流 /Current	50mA/12V DC
工作温度 /Operating Temperature	-25°C~ 65°C
电线拉脱力 /Wire Tension	≥130N
耐久性 /Durability	10,0000 mating cycle



## DK138/2

结构简单、工艺可靠、性能稳定；PC/ABS 高强度塑胶外壳；开放式侧盖，便于维修；  
铁氟龙耐高温电线，适应各种恶劣环境；达到 IPX4 级防水能力；材料环保，RoHS 认证。

Simple structure, reliable technology, stable performance; High strength PC/ABS shell, Light, durable; Removable side cover, easy for maintenance; Teflon high temperature resistant wire, suitable for various environments; IPX4 waterproof ability; Enviromental material, RoHS certification.

标准 /Approval	RoHS / REACH
尺寸 /Size	L20mm W46mm H54mm
重量 /Weight	21g
防水 /Waterproof	IPX4
材料 /Material	PA6+GF20
芯线 /Wiring	2 Pins
电流 /Current	3A/12V DC
工作温度 /Operating Temperature	-25°C~ 65°C
电线拉脱力 /Wire Tension	≥130N
耐久性 /Durability	10,0000 mating cycle



## DK16

结构简单、工艺可靠、性能稳定；PC/ABS 高强度塑胶外壳；夹紧式铝合金锁紧环，  
锁紧更稳固；达到 IPX4 级防水能力；材料环保，RoHS、REACH 认证。

Simple structure, reliable technology, stable performance;  
High strength PC/ABS shell, light, durable;  
Aluminum handlebar clamping loop with firm locking performance;  
IPX4 waterproof ability; Enviromental material, RoHS、REACH certification.

标准 /Approval	RoHS / REACH
尺寸 /Size	L65mm W28mm H39mm
重量 /Weight	23g
防水 /Waterproof	IPX4
材料 /Material	PC/ABS
芯线 /Wiring	2/3 Pins
电流 /Current	3A/12V DC
工作温度 /Operating Temperature	-25°C~ 65°C
电线拉脱力 /Wire Tension	≥130N
耐久性 /Durability	10,0000 mating cycle



# GRIPS

## T546+DK172

The grip has heating function, five temperature levels are optional; High strength plastic shell, light, Durable; Simple structure, reliable technology, stable performance; Conforming to ergonomic operation, light and comfortable; Teflon high temperature resistant wire, suitable for various; Reach IPX5 waterproof ability; Enviromental, and RoHS certification.

把套带发热功能,5档温度可选; 强度塑胶外壳, 轻巧、耐用; 安结构简单、工艺可靠、性能稳定; 符合人体工程操作, 手感轻盈、舒适; 铁氟龙耐高温电线, 适应各种恶劣环境; 达到 IPX5 级防水性能; 材料环保, RoHS 认证。

标准 /Approval	RoHS / REACH	工作温度 /Operating Temperature	-25°C~ 65°C
尺寸 /Size	L132mm W53mm H51mm	电线拉脱力 /Wire Tension	≥30N
重量 /Weight	左手 80g, 右手 65g	锁紧扭矩 / Locking torque	1.5N.m
防水 /Waterproof	IPX5	扭转强度 /Spin Intensity	≥4N.m
材料 /Material	ABS+ 硅胶 50A	开关 耐久性 /Switch Durability	100,000 mating cycle
芯线 /Wiring	把套 2 Pins / 开关 3 Pins	把套加热温度 /Grip Heat Temperature	50°C~ 90°C
电压 / 电流 / Voltage	12V / 2.8A	把套加热耐久性 /Grip Heat Durability	持续加热 ≥2,000h



## T562

NEW

High strength plastic shell, light, Durable; Simple structure, reliable technology, stable performance; Conforming to ergonomic operation, light and comfortable; Enviromental, and RoHS certification.

强度塑胶外壳, 轻巧、耐用; 安结构简单、工艺可靠、性能稳定; 符合人体工程操作, 手感轻盈、舒适; 材料环保, RoHS 认证。

标准 /Approval	RoHS / REACH	工作温度 /Operating Temperature	-25°C~ 65°C
尺寸 /Size	L122.6mm W34mm H53.3mm	把套拉脱力 /Wire Tension	≥400N
重量 /Weight	80g	锁紧扭矩 / Locking torque	2.7N.m
材料 /Material	TPE+PP	扭转强度 /Spin Intensity	≥9N.m
安装深度 /Fitting Depth	111mm		



# ODM CASE INTRODUCTION

客户定制产品

客户定制



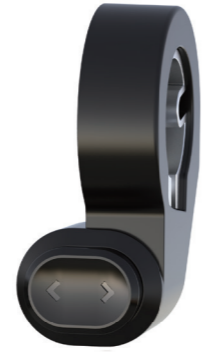
Customized products are only for reference, which shows that we have the ability and willingness to produce and develop these products. For details, please contact our sales department or regional offices.

客户定制产品只作为展示使用，表明了我们有生产和开发这些产品的能力和意愿，详情请与五星销售部或各区域办事处联系。

## HALL SENSOR THROTTLES



SWITCHES



SWITCHES



ELECTRIC BRAKE LEVERS

ELECTRIC BRAKE LEVERS





关注我们

## 建德市五星车业有限公司

**JIANDE WUXING BICYCLE CO., LTD.**

地址：中国浙江省建德市梅城镇南峰工业功能区众悦路1号  
ADD: No.1 Zhongyue Road, Chengnan Industrial Zone, Meicheng Town, Jiande City, Zhejiang Province.China  
TEL : 86(0)571-5831 9944  
FAX : 86(0)571-5831 9948

GERMAN SUBSIDIARY:  
Starunion E-Bike Components GmbH  
Am Sägewerk 1 | 55124 | Mainz | Germany  
TEL: + 49 (0) 6131 5866439  
Mobile: + 49(0)172 2329066

Email: [service@star-union.net](mailto:service@star-union.net)  
[info@star-union.net](mailto:info@star-union.net)  
Web: <https://www.star-union.net>



电动两轮零件专家